

APLN polyclonal antibody

Catalog: BS60997

Host: Rabbit

Reactivity: Human

BackGround:

Apelin (APEL), an endogenous ligand for APJ, is an alternate coreceptor with CD4 for HIV-1 infection. This secreted protein inhibits HIV-1 entry into cells that co-express APJ and CD4. By proteolytic processing of the peptide precursor, several different active peptides may be produced. Apelin-36, one such inotropic peptide, is being investigated as a potential plasma marker of cardiopulmonary disease. Apelin is highly expressed in brain, mainly in the thalamus, frontal cortex, hypothalamus and midbrain. Apelin is also secreted by the mammary gland into the colostrum and milk. Oral intake of apelin (in milk and colostrum) may be important in the modulation of the immune responses in neonates and newborns. Apelin has also been found to be a potent stimulator of cardiac contractility and may function in the regulation of the cardiovascular system.

Product:

1 mg/ml in Phosphate buffered saline (PBS) with 0.05% sodium azide, approx. pH 7.3.

Molecular Weight:

~ 9 kDa

Swiss-Prot:

Q9ULZ1

Purification&Purity:

The antibody was affinity-purified from rabbit antiserum

by affinity-chromatography using epitope-specific immunogen and the purity is > 95% (by SDS-PAGE).

Applications:

WB: 1:500~1:1000

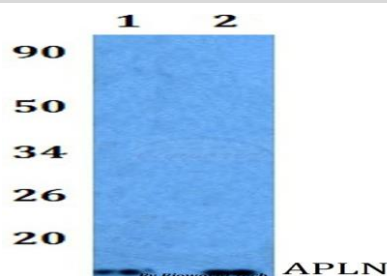
Storage&Stability:

Store at 4 °C short term. Aliquot and store at -20 °C long term. Avoid freeze-thaw cycles.

Specificity:

APLN polyclonal antibody detects endogenous levels of APLN protein.

DATA:



Western blot (WB) analysis of APLN polyclonal antibody at 1:500 dilution Lane1:HEK293T whole cell lysate Lane2:HELA whole cell lysate

Note:

For research use only, not for use in diagnostic procedure.

Bioworld Technology, Inc.

Add: 1660 South Highway 100, Suite 500 St. Louis Park, MN 55416, USA.

Email: info@bioworld.com

Tel: 6123263284

Fax: 6122933841

Bioworld technology, co. Ltd.

Add: No 9, weidi road Qixia District Nanjing, 210046, P. R. China.

Email: info@biogot.com

Tel: 0086-025-68037686

Fax: 0086-025-68035151