

GZMM polyclonal antibody

Catalog: BS60988

Host: Rabbit

Reactivity: Human, Mouse, Rat

BackGround:

The granzyme family of proteins belong to the larger peptidase S1 family. Granzyme A and granzyme B are serine proteases that facilitate apoptotic signaling in cytotoxic T lymphocytes (CTL) and natural killer (NK) cells. Within the granules of activated CTLs, granzyme A and granzyme B are processed and converted to their active forms by the lysosomal cysteine protease cathepsin C. Once cleaved, these active proteases target distinct substrates for proteolysis, thereby mediating apoptosis through two different pathways. Granzyme H localizes to cytoplasmic granules of cytolytic T lymphocytes and is important for target cell lysis in cell-mediated immune responses. Granzyme K is a serine protease localizing to the granules of NK cells and cytotoxic T lymphocytes. Granzyme M (also designated NK cell granular protease, HU-Met-1 or met-1 serine protease) contains one peptidase S1 domain. Granzyme M is a Trypsin-fold serine protease that localizes to granules of large granular lymphocytes (NK cells) and cleaves peptide substrates after leucine, norleucine or methionine. This enzyme may play a role in target cell death induction by cytotoxic lymphocytes.

Product:

1 mg/ml in Phosphate buffered saline (PBS) with 0.05% sodium azide, approx. pH 7.3.

Molecular Weight:

~ 28 kDa

Swiss-Prot:

P51124

Purification&Purity:

The antibody was affinity-purified from rabbit antiserum by affinity-chromatography using epitope-specific immunogen and the purity is > 95% (by SDS-PAGE).

Applications:

WB: 1:500~1:1000

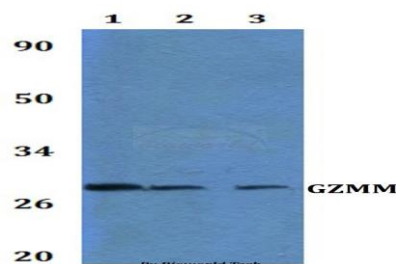
Storage&Stability:

Store at 4 °C short term. Aliquot and store at -20 °C long term. Avoid freeze-thaw cycles.

Specificity:

GZMM polyclonal antibody detects endogenous levels of GZMM protein.

DATA:



Western blot (WB) analysis of GZMM polyclonal antibody at 1:500 dilution

Line1:Hela whole cell lysate

Line2:PC12 whole cell lysate

Line3:sp20 whole cell lysate

Note:

For research use only, not for use in diagnostic procedure.

Bioworld Technology, Inc.

Add: 1660 South Highway 100, Suite 500 St. Louis Park, MN 55416, USA.

Email: info@bioworld.com

Tel: 6123263284

Fax: 6122933841

Bioworld technology, co. Ltd.

Add: No 9, weidi road Qixia District Nanjing, 210046, P. R. China.

Email: info@biogot.com

Tel: 0086-025-68037686

Fax: 0086-025-68035151