

APAF1 polyclonal antibody

Catalog: BS60866

Host: Rabbit

Reactivity: Human, Mouse, Rat

Background:

The mammalian homologs of the Ced-4 proteins, Apaf-1 (Ced-4), Nod1 (CARD4), and Nod2 contain a caspase recruitment domain (CARD) and a putative nucleotide binding domain, signified by a consensus Walker's A box (P-loop) and B box (Mg²⁺-binding site). Nod1 contains a putative regulatory domain and multiple leucine-rich repeats. Nod1 is a member of a growing family of intracellular proteins which share structural homology to the apoptosis regulator Apaf-1. Nod1 associates with the CARD-containing kinase RICK and activates NFκB. The self-association of Nod1 mediates proximity of RICK and the interaction of RICK with IKKγ. In addition, Nod-1 binds to multiple caspases with long prodomains, but specifically activates caspase-9 and promotes caspase-9-induced apoptosis. Nod2 is composed of two N-terminal CARDs, a nucleotide-binding domain, and multiple C-terminal leucine-rich repeats. The expression of Nod2 is highly restricted to monocytes, and activates NFκB in response to bacterial lipopoly-saccharides.

Product:

1 mg/ml in Phosphate buffered saline (PBS) with 0.05% sodium azide, approx. pH 7.3.

Molecular Weight:

~ 38 kDa

Swiss-Prot:

O14727

Purification&Purity:

The antibody was affinity-purified from rabbit antiserum by affinity-chromatography using epitope-specific immunogen and the purity is > 95% (by SDS-PAGE).

Applications:

WB: 1:500~1:1000

IHC: 1:50~1:200

Storage&Stability:

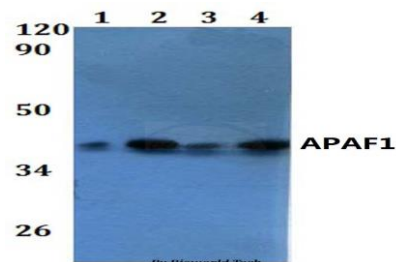
Store at 4 °C short term. Aliquot and store at -20 °C long

term. Avoid freeze-thaw cycles.

Specificity:

APAF1 polyclonal antibody detects endogenous levels of APAF1 protein.

DATA:



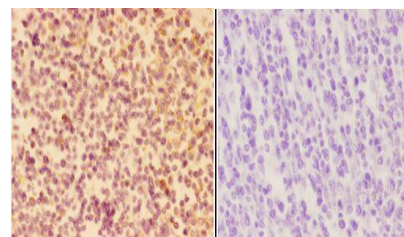
Western blot (WB) analysis of APAF1 polyclonal antibody at 1:500 dilution

Lane1:HEK293T whole cell lysate

Lane2:Raw264.7 whole cell lysate

Lane3:PC12 whole cell lysate

Lane4:HELA whole cell lysate



BS60866
Lot:CN45141

Immunohistochemistry (IHC) analyzes of APAF1 pAb in paraffin-embedded human tonsil carcinoma tissue at 1:50, showing cytoplasmic staining. Negative control (the right) Using PBS instead of primary antibody, secondary antibody is Goat Anti-Rabbit IgG-biotin followed by avidin-peroxidase.

Note:

For research use only, not for use in diagnostic procedure.

Bioworld Technology, Inc.

Add: 1660 South Highway 100, Suite 500 St. Louis Park, MN 55416, USA.

Email: info@bioworld.com

Tel: 6123263284

Fax: 6122933841

Bioworld technology, co. Ltd.

Add: No 9, weidi road Qixia District Nanjing, 210046, P. R. China.

Email: info@biogot.com

Tel: 0086-025-68037686

Fax: 0086-025-68035151



PRODUCT DATA SHEET

Bioworld Technology, Inc.

Bioworld Technology, Inc.

Add: 1660 South Highway 100, Suite 500 St. Louis Park,
MN 55416, USA.

Email: info@bioworld.com

Tel: 6123263284

Fax: 6122933841

Bioworld technology, co. Ltd.

Add: No 9, weidi road Qixia District Nanjing, 210046,
P. R. China.

Email: info@biogot.com

Tel: 0086-025-68037686

Fax: 0086-025-68035151