

## ADAM28 polyclonal antibody

Catalog: BS60838

Host: Rabbit

Reactivity: Human, Mouse, Rat

### Background:

The ADAM (a disintegrin and metalloprotease) protein family, which includes over 30 membrane-anchored, glycosylated, Zn<sup>2+</sup> dependent proteases, plays a role in cell-cell and cell-matrix interface related processes, including fertilization, muscle fusion, secretion of TNF $\alpha$  (tumor necrosis factor  $\alpha$ ), and modulation of the neurogenic function of Notch and Delta. The ADAM proteins possess a signal-domain, a pro-domain, a metalloprotease domain, a disintegrin domain (integrin ligand), a cysteine-rich region, an epidermal growth factorlike domain, a transmembrane domain and a cytoplasmic tail. ADAMs are expressed in a wide range of mammalian tissues and several are abundantly expressed in the male reproductive tract. ADAM28, also designated MDC-L, is more closely related to snake venom metalloproteases (SVMPs) than to other ADAM family members. ADAM28 displays a high level of expression in lymphocytes and epididymis, and functions mainly on the cell surface, where it mediates cell adhesion through its binding to integrin  $\alpha 4\beta 1$ . The gene encoding human ADAM28 maps to chromosome 8p21.2.

### Product:

1 mg/ml in Phosphate buffered saline (PBS) with 15 mM sodium azide, approx. pH 7.2.

### Molecular Weight:

~ 87 kDa

### Swiss-Prot:

Q9UKQ2

### Purification&Purity:

The antibody was affinity-purified from rabbit antiserum by affinity-chromatography using epitope-specific immunogen and the purity is > 95% (by SDS-PAGE).

### Applications:

WB: 1:500~1:1000

IHC: 1:50~1:200

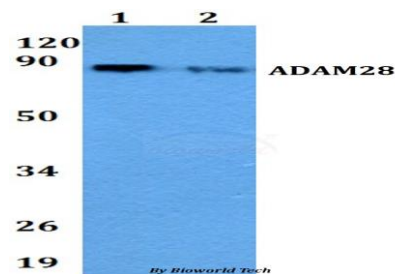
### Storage&Stability:

Store at 4 °C short term. Aliquot and store at -20 °C long term. Avoid freeze-thaw cycles.

### Specificity:

ADAM28 polyclonal antibody detects endogenous levels of ADAM28 protein.

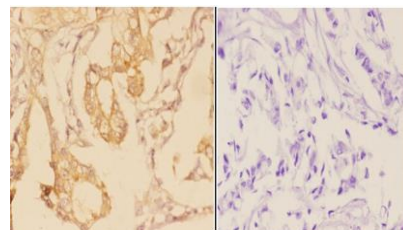
### DATA:



Western blot (WB) analysis of ADAM28 polyclonal antibody at 1:500 dilution

Lane1:A549 whole cell lysate

Lane2:Raw264.7 whole cell lysate



Immunohistochemistry (IHC) analyzes of ADAM28 pAb in paraffin-embedded human breast carcinoma tissue at 1:50, showing membrane and secreted staining. Negative control (the right) Using PBS instead of primary antibody, secondary antibody is Goat Anti-Rabbit IgG-biotin followed by avidin-peroxidase.

### Bioworld Technology, Inc.

Add: 1660 South Highway 100, Suite 500 St. Louis Park, MN 55416, USA.

Email: [info@bioworld.com](mailto:info@bioworld.com)

Tel: 6123263284

Fax: 6122933841

### Bioworld technology, co. Ltd.

Add: No 9, weidi road Qixia District Nanjing, 210046, P. R. China.

Email: [info@biogot.com](mailto:info@biogot.com)

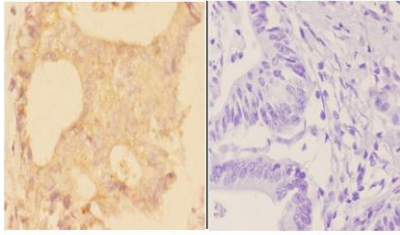
Tel: 0086-025-68037686

Fax: 0086-025-68035151



## PRODUCT DATA SHEET

Bioworld Technology, Inc.



BS50833  
Lot CN45141

Immunohistochemistry (IHC) analyzes of ADAM28 pAb in parafin-embedded human colon carcinoma tissue at 1:50, showing membrane and secreted staining. Negative control (the right) Using PBS instead of primary antibody, secondary antibody is Goat Anti-Rabbit IgG-biotin followed by avidin-peroxidase.

### Note:

For research use only, not for use in diagnostic procedure.

### Bioworld Technology, Inc.

Add: 1660 South Highway 100, Suite 500 St. Louis Park,  
MN 55416, USA.

Email: [info@bioworld.com](mailto:info@bioworld.com)

Tel: 6123263284

Fax: 6122933841

### Bioworld technology, co. Ltd.

Add: No 9, weidi road Qixia District Nanjing, 210046,  
P. R. China.

Email: [info@biogot.com](mailto:info@biogot.com)

Tel: 0086-025-68037686

Fax: 0086-025-68035151