

ACAN polyclonal antibody

Catalog: BS60808

Host: Rabbit

Reactivity: Human,Rat,Mouse

BackGround:

The large chondroitin sulfate proteoglycan, aggrecan, is the predominant proteoglycan present in cartilage. Aggrecan is a member of the chondroitin sulphate proteoglycan family, which also includes versican/PG-M, neurocan and brevican. Aggrecan is a complex multidomain macromolecule that undergoes extensive processing and post-translational modification. Aggrecan in cartilage forms aggregates with hyaluronan and link protein, embedded in a collagen network. Aggrecan accounts for the compressive stiffness and resilience of the hyaline cartilage. Many forms of inflammatory arthritis are shown to be accompanied with aggrecan degradation and loss from the cartilage.

Product:

Rabbit IgG, 1mg/ml in PBS with 0.02% sodium azide, 50% glycerol, pH7.2

Molecular Weight:

~ 260 kDa

Swiss-Prot:

P16112

Purification&Purity:

The antibody was affinity-purified from rabbit antiserum by affinity-chromatography using epitope-specific immunogen and the purity is > 95% (by SDS-PAGE).

Applications:

WB: 1:500~1:1000

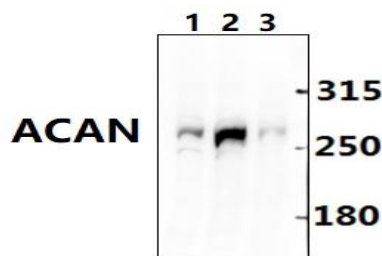
Storage&Stability:

Store at 4 °C short term. Aliquot and store at -20 °C long term. Avoid freeze-thaw cycles.

Specificity:

ACAN polyclonal antibody detects endogenous levels of ACAN protein.

DATA:



Western blot (WB) analysis of ACAN polyclonal antibody at 1:500 dilution

Lane1:CT26 whole cell lysate

Lane2:C6 whole cell lysate

Lane3:Hela whole cell lysate

Note:

For research use only, not for use in diagnostic procedure.

Bioworld Technology, Inc.

Add: 1660 South Highway 100, Suite 500 St. Louis Park, MN 55416, USA.

Email: info@bioworld.com

Tel: 6123263284

Fax: 6122933841

Bioworld technology, co. Ltd.

Add: No 9, weidi road Qixia District Nanjing, 210046, P. R. China.

Email: info@biogot.com

Tel: 0086-025-68037686

Fax: 0086-025-68035151