

CDC42BPA polyclonal antibody

Catalog: BS60785

Host: Rabbit

Reactivity: Human, Mouse

BackGround:

Protein kinases comprise a large group of encoded factors that regulate cellular processes by catalyzing the transfer of a phosphate group to a hydroxyl acceptor in serine, threonine or tyrosine residues. Myotonic dystrophy kinase-related Cdc42-binding (DMPK-like) kinases-a and b (MRCK-a, b) contain a cysteine-rich motif and a putative pleckstrin homology domain. MRCKs can phosphorylate nonmuscle myosin light chain and influences actin-myosin contractility. MRCK-a can phosphorylate and activate LIM kinases downstream of Cdc42, which leads to inactivation of ADF/cofilin and to Actin cytoskeletal reorganization. MRCK-a can also influence neurite outgrowth promoted by Cdc42 and Rac.

Product:

Rabbit IgG, 1mg/ml in PBS with 0.02% sodium azide, 50% glycerol, pH7.2

Molecular Weight:

~ 186kDa

Swiss-Prot:

Q5VT25

Purification&Purity:

The antibody was affinity-purified from rabbit antiserum by affinity-chromatography using epitope-specific immunogen and the purity is > 95% (by SDS-PAGE).

Applications:

WB: 1:500~1:1000

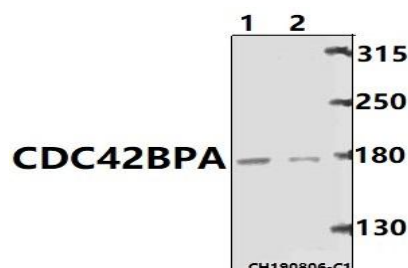
Storage&Stability:

Store at 4 °C short term. Aliquot and store at -20 °C long term. Avoid freeze-thaw cycles.

Specificity:

CDC42BPA polyclonal antibody detects endogenous levels of CDC42BPA protein.

DATA:



Western blot (WB) analysis of CDC42BPA pAb at 1:500 dilution

Lane1: Panc1 whole cell lysate(40ug)

Lane2: U-87MG whole cell lysate(40ug)

Note:

For research use only, not for use in diagnostic procedure.

Bioworld Technology, Inc.

Add: 1660 South Highway 100, Suite 500 St. Louis Park, MN 55416, USA.

Email: info@bioworld.com

Tel: 6123263284

Fax: 6122933841

Bioworld technology, co. Ltd.

Add: No 9, weidi road Qixia District Nanjing, 210046, P. R. China.

Email: info@biogol.com

Tel: 0086-025-68037686

Fax: 0086-025-68035151