

## COL15A1 polyclonal antibody

Catalog: BS60772

Host: Rabbit

Reactivity: Human

### BackGround:

Collagen Type XV (COL15 gene product) and XVIII (COL18 gene product) form the new subgroup MULTIPLEXIN, within the diverse family of collagens, which contains nineteen distinct types of collagens found in vertebrates. Both Type XV and XVIII collagens are characterized by extensive interruptions in their collagenous sequences. Members of the MULTIPLEXIN subgroup contain polypeptides with multiple triple-helical domains separated and flanked by non-triple-helical regions. Type XV is predominantly expressed in internal organs such as adrenal gland, kidney and pancreas. Type XVIII encodes two different  $\alpha 1$  chains, which have different signal peptides and variant N-terminal non-collagenous NC1 domains of 495 and 303 amino acids. The long variant NC1-434 Type XVIII mRNAs are predominantly expressed in liver, while the variant NC1-303 mRNAs are predominantly expressed in heart, kidney, placenta, prostate, ovary, skeletal muscle and small intestine. Endostatin is a fragment of the C-terminal domain NC1 of Collagen Type XV and XVIII that inhibits angiogenesis and tumor growth. Unlike endostatin XVIII, endostatin XV does not bind zinc or heparin, however both endostatins can inhibit chorioallantoic membrane angiogenesis induced by basic FGF or VEGF. Collagen Type XV and XVIII are also widely present in basement membrane zones, suggesting their roles in basement membrane-stromal interactions and involvement with angiogenic and pathological processes.

### Product:

1 mg/ml in Phosphate buffered saline (PBS) with 15 mM sodium azide, approx. pH 7.2.

### Molecular Weight:

~ 142 kDa

### Swiss-Prot:

P39059

### Purification&Purity:

The antibody was affinity-purified from rabbit antiserum by affinity-chromatography using epitope-specific immunogen and the purity is > 95% (by SDS-PAGE).

### Applications:

WB: 1:500~1:1000

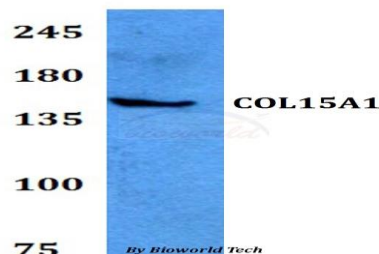
### Storage&Stability:

Store at 4 °C short term. Aliquot and store at -20 °C long term. Avoid freeze-thaw cycles.

### Specificity:

COL15A1 polyclonal antibody detects endogenous levels of COL15A1 protein.

### DATA:



Western blot (WB) analysis of COL15A1 polyclonal antibody at 1:500 dilution

Lane1:HEK293T whole cell lysate

### Note:

For research use only, not for use in diagnostic procedure.

### Bioworld Technology, Inc.

Add: 1660 South Highway 100, Suite 500 St. Louis Park, MN 55416, USA.

Email: [info@bioworld.com](mailto:info@bioworld.com)

Tel: 6123263284

Fax: 6122933841

### Bioworld technology, co. Ltd.

Add: No 9, weidi road Qixia District Nanjing, 210046, P. R. China.

Email: [info@biogot.com](mailto:info@biogot.com)

Tel: 0086-025-68037686

Fax: 0086-025-68035151