

GRM1 polyclonal antibody

Catalog: BS60765

Host: Rabbit

Reactivity: Human

BackGround:

The mGluR proteins (metabotropic glutamate receptors) are members of the G-protein-coupled receptor family and are functionally and pharmacologically distinct from the GluR proteins (ionotropic glutamate receptors). The eight currently known mGluR proteins are mediated by two G-proteins with opposing regulation of adenylate cyclase pathways. The activities of mGluR1 and mGluR5 are mediated by a G-protein that activates a phosphatidylinositol-calcium second messenger system and generates a calcium-activated chloride current. The remainder of the eight sub-types of mGluR have an activity mediated by a G-protein that inhibits adenylate cyclase activity. mGluR-1, which can form a homodimer acts as a receptor for glutamate. It may also be involved in glutamate activity in the CNS.

Product:

1 mg/ml in Phosphate buffered saline (PBS) with 15 mM sodium azide, approx. pH 7.2.

Molecular Weight:

~ 132 kDa

Swiss-Prot:

Q13255

Purification&Purity:

The antibody was affinity-purified from rabbit antiserum by affinity-chromatography using epitope-specific im-

munogen and the purity is > 95% (by SDS-PAGE).

Applications:

WB: 1:500~1:1000

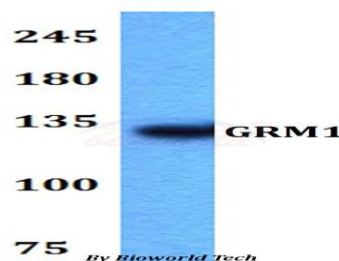
Storage&Stability:

Store at 4 °C short term. Aliquot and store at -20 °C long term. Avoid freeze-thaw cycles.

Specificity:

GRM1 polyclonal antibody detects endogenous levels of GRM1 protein.

DATA:



Western blot (WB) analysis of GRM1 polyclonal antibody at 1:500 dilution

Lane1:A549 whole cell lysate

Note:

For research use only, not for use in diagnostic procedure.

Bioworld Technology, Inc.

Add: 1660 South Highway 100, Suite 500 St. Louis Park, MN 55416, USA.

Email: info@bioworld.com

Tel: 6123263284

Fax: 6122933841

Bioworld technology, co. Ltd.

Add: No 9, weidi road Qixia District Nanjing, 210046, P. R. China.

Email: info@biogot.com

Tel: 0086-025-68037686

Fax: 0086-025-68035151