

## ADAM19 polyclonal antibody

Catalog: BS60747

Host: Rabbit

Reactivity: Human

### BackGround:

The ADAM (a disintegrin and metalloprotease) protein family, which includes over 30 membrane-anchored, glycosylated, Zn<sup>2+</sup> dependent proteases, plays a role in cell-cell and cell-matrix interface related processes, including fertilization, muscle fusion, secretion of TNF $\alpha$  (tumor necrosis factor  $\alpha$ ), and modulation of the neurogenic function of Notch and Delta. The ADAM proteins possess a signal-domain, a pro-domain, a metalloprotease domain, a disintegrin domain (Integrin ligand), a cysteine-rich region, an epidermal growth factor-like domain, a transmembrane domain and a cytoplasmic tail. ADAMs are expressed in a wide range of mammalian tissues and several are abundantly expressed in the male reproductive tract. Expression of ADAM19, also designated meltrin b, is highest in the peripheral nervous system during embryogenesis, but is also apparent in placenta, brain, heart, lung, leukocytes, and SW480 cells. ADAM19 also serves as a dendritic cell marker. Truncation of ADAM19 in its cysteine-rich domain is necessary to exert its proteolytic activity on specific substrates, including  $\alpha$ 2-macroglobulin.

### Product:

1 mg/ml in Phosphate buffered saline (PBS) with 15 mM sodium azide, approx. pH 7.2.

### Molecular Weight:

~ 105 kDa

### Swiss-Prot:

Q9H013

### Purification&Purity:

The antibody was affinity-purified from rabbit antiserum by affinity-chromatography using epitope-specific immunogen and the purity is > 95% (by SDS-PAGE).

### Applications:

WB: 1:500~1:1000

IHC: 1:50~1:200

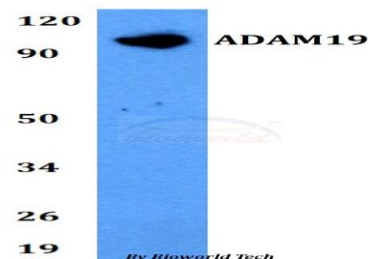
### Storage&Stability:

Store at 4 °C short term. Aliquot and store at -20 °C long term. Avoid freeze-thaw cycles.

### Specificity:

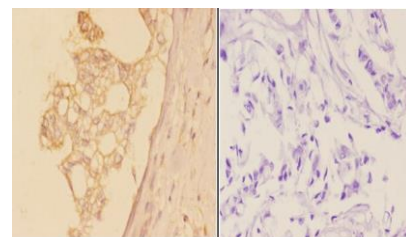
ADAM19 polyclonal antibody detects endogenous levels of ADAM19 protein.

### DATA:



Western blot (WB) analysis of ADAM19 polyclonal antibody at 1:500 dilution

Lane1:MCF-7 whole cell lysate



BS60747  
Lot CN45141

Immunohistochemistry (IHC) analyzes of ADAM19 pAb in paraffin-embedded human breast carcinoma tissue at 1:50, showing cytoplasmic and membrane staining. Negative control (the right) Using PBS instead of primary antibody, secondary antibody is Goat Anti-Rabbit IgG-biotin followed by avidin-peroxidase.

### Note:

For research use only, not for use in diagnostic procedure.

### Bioworld Technology, Inc.

Add: 1660 South Highway 100, Suite 500 St. Louis Park, MN 55416, USA.

Email: [info@bioworld.com](mailto:info@bioworld.com)

Tel: 6123263284

Fax: 6122933841

### Bioworld technology, co. Ltd.

Add: No 9, weidi road Qixia District Nanjing, 210046, P. R. China.

Email: [info@biogot.com](mailto:info@biogot.com)

Tel: 0086-025-68037686

Fax: 0086-025-68035151



## PRODUCT DATA SHEET

Bioworld Technology, Inc.

---

---

### **Bioworld Technology, Inc.**

**Add:** 1660 South Highway 100, Suite 500 St. Louis Park,  
MN 55416, USA.

**Email:** [info@bioworld.com](mailto:info@bioworld.com)

**Tel:** 6123263284

**Fax:** 6122933841

### **Bioworld technology, co. Ltd.**

**Add:** No 9, weidi road Qixia District Nanjing, 210046,  
P. R. China.

**Email:** [info@biogot.com](mailto:info@biogot.com)

**Tel:** 0086-025-68037686

**Fax:** 0086-025-68035151