

## ADAM12 polyclonal antibody

Catalog: BS60740

Host: Rabbit

Reactivity: Human, Mouse, Rat

### Background:

ADAM (a disintegrin and metalloprotease) proteins are a family of over 30 membrane-anchored, glycosylated, Zn<sup>2+</sup> dependent proteases that are involved in cell-cell, cell-matrix interface related processes including fertilization, muscle fusion, secretion of TNF (tumor necrosis factor  $\alpha$ ), and modulation of the neurogenic function of Notch and Delta. ADAM proteins possess a signal domain, a pro-domain, a metalloprotease domain, a disintegrin domain (integrin ligand), a cysteine-rich region, an epidermal growth factor-like domain, a transmembrane domain and a cytoplasmic tail. ADAMs are expressed in brain, testis, epididymis, ovary, breast, placenta, liver, heart, lung, bone and muscle, and catalyze proteolysis, adhesion, fusion and intracellular signaling. ADAM12 (Meltrin- $\alpha$ ) is produced as 2 differentially spliced isoforms, a 718 amino acid secreted form (ADAM12S) and a 881 amino acid membrane-bound form (ADAM12L), and is involved in egg-sperm fusion.

### Product:

1 mg/ml in Phosphate buffered saline (PBS) with 15 mM sodium azide, approx. pH 7.2.

### Molecular Weight:

~ 100 kDa

### Swiss-Prot:

O43184

### Purification&Purity:

The antibody was affinity-purified from rabbit antiserum by affinity-chromatography using epitope-specific immunogen and the purity is > 95% (by SDS-PAGE).

### Applications:

WB: 1:500~1:1000

IHC: 1:50~1:200

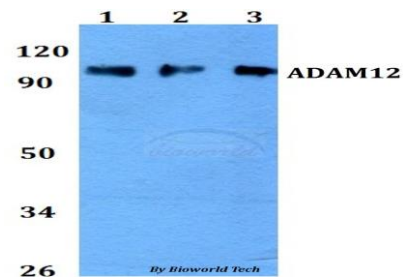
### Storage&Stability:

Store at 4 °C short term. Aliquot and store at -20 °C long term. Avoid freeze-thaw cycles.

### Specificity:

ADAM12 polyclonal antibody detects endogenous levels of ADAM12 protein.

### DATA:

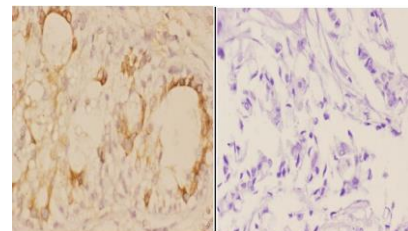


Western blot (WB) analysis of ADAM12 polyclonal antibody at 1:500 dilution

Lane1:HEK293T whole cell lysate

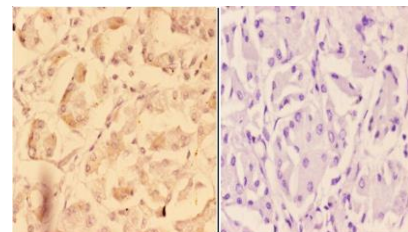
Lane2:Raw264.7 whole cell lysate

Lane3:H9C2 whole cell lysate



BS60740  
Lot:CN45141

Immunohistochemistry (IHC) analyzes of ADAM12 pAb in paraffin-embedded human breast carcinoma tissue at 1:50, showing cytoplasmic, membrane and nuclear staining. Negative control (the right) Using PBS instead of primary antibody, secondary antibody is Goat Anti-Rabbit IgG-biotin followed by avidin-peroxidase.



BS60740  
Lot:CN45141

Immunohistochemistry (IHC) analyzes of ADAM12 pAb in paraffin-

### Bioworld Technology, Inc.

Add: 1660 South Highway 100, Suite 500 St. Louis Park, MN 55416, USA.

Email: [info@bioworld.com](mailto:info@bioworld.com)

Tel: 6123263284

Fax: 6122933841

### Bioworld technology, co. Ltd.

Add: No 9, weidi road Qixia District Nanjing, 210046, P. R. China.

Email: [info@biogot.com](mailto:info@biogot.com)

Tel: 0086-025-68037686

Fax: 0086-025-68035151



## PRODUCT DATA SHEET

Bioworld Technology, Inc.

fin-embedded human stomach carcinoma tissue at 1:50, showing cytoplasmic, membrane and nuclear staining. Negative control (the right) Using PBS instead of primary antibody, secondary antibody is

Goat Anti-Rabbit IgG-biotin followed by avidin-peroxidase.

**Note:**

For research use only, not for use in diagnostic procedure.

---

**Bioworld Technology, Inc.**

Add: 1660 South Highway 100, Suite 500 St. Louis Park,  
MN 55416, USA.

Email: [info@bioworld.com](mailto:info@bioworld.com)

Tel: 6123263284

Fax: 6122933841

**Bioworld technology, co. Ltd.**

Add: No 9, weidi road Qixia District Nanjing, 210046,  
P. R. China.

Email: [info@biogot.com](mailto:info@biogot.com)

Tel: 0086-025-68037686

Fax: 0086-025-68035151