

## KIRREL2 polyclonal antibody

Catalog: BS60707

Host: Rabbit

Reactivity: Human, Rat

### BackGround:

NEPH3 (nephrin-like protein 3), also referred to as NLG1, FILTRIN or KIRREL2 (kin of IRRE like 2), is a 708 amino acid protein that is a member of the immunoglobulin superfamily of cell adhesion molecules. NEPH3 consists of five extracellular Ig-like repeats, a transmembrane domain, several glycosylation sites and a cytoplasmic domain that has a stretch of nine conserved residues. NEPH3 localizes to the interpodocyte filtration slit in the kidney and to the Langerhans islet beta cells in the pancreas. NEPH3 is thought to be involved in the maintenance of the glomerular filtration barrier in the kidney and in pancreas development. Downregulation of NEPH3 is implicated in several proteinuric diseases. Five isoforms exist due to alternative splicing events.

### Product:

1 mg/ml in Phosphate buffered saline (PBS) with 15 mM sodium azide, approx. pH 7.2.

### Molecular Weight:

~ 75 kDa

### Swiss-Prot:

Q6UWL6

### Purification&Purity:

The antibody was affinity-purified from rabbit antiserum by affinity-chromatography using epitope-specific immunogen and the purity is > 95% (by SDS-PAGE).

### Applications:

WB: 1:500~1:1000

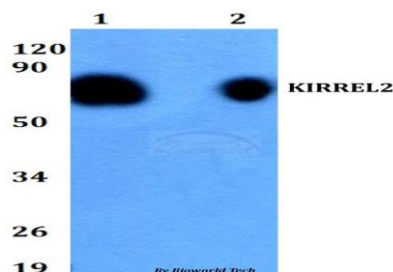
### Storage&Stability:

Store at 4 °C short term. Aliquot and store at -20 °C long term. Avoid freeze-thaw cycles.

### Specificity:

KIRREL2 polyclonal antibody detects endogenous levels of KIRREL2 protein.

### DATA:



Western blot (WB) analysis of KIRREL2 polyclonal antibody at 1:500 dilution

Lane1: HEK293T whole cell lysate

Lane2: H9C2 whole cell lysate

### Note:

For research use only, not for use in diagnostic procedure.

### Bioworld Technology, Inc.

Add: 1660 South Highway 100, Suite 500 St. Louis Park, MN 55416, USA.

Email: [info@bioworld.com](mailto:info@bioworld.com)

Tel: 6123263284

Fax: 6122933841

### Bioworld technology, co. Ltd.

Add: No 9, weidi road Qixia District Nanjing, 210046, P. R. China.

Email: [info@biogot.com](mailto:info@biogot.com)

Tel: 0086-025-68037686

Fax: 0086-025-68035151