

## EDEM1 polyclonal antibody

Catalog: BS60705

Host: Rabbit

Reactivity: Human, Mouse, Rat

### BackGround:

Proteins expressed in the endoplasmic reticulum (ER) are subjected to a tight quality control. Terminally misfolded proteins in the endoplasmic reticulum (ER) are retrotranslocated to the cytoplasm and degraded by proteasomes through a mechanism known as ER-associated degradation (ERAD). EDEM (ER degradation-enhancing alpha-mannosidase-like) protein is a type II membrane protein that localizes to the ER and is directly involved in ERAD. EDEM targets misfolded glycoproteins for degradation in an N-glycan-dependent manner and extracts misfolded glycoproteins from the calnexin cycle. The human EDEM gene maps to chromosome 3p.

### Product:

1 mg/ml in Phosphate buffered saline (PBS) with 15 mM sodium azide, approx. pH 7.2.

### Molecular Weight:

~ 74 kDa

### Swiss-Prot:

Q92611

### Purification&Purity:

The antibody was affinity-purified from rabbit antiserum by affinity-chromatography using epitope-specific immunogen and the purity is > 95% (by SDS-PAGE).

### Applications:

WB: 1:500~1:1000

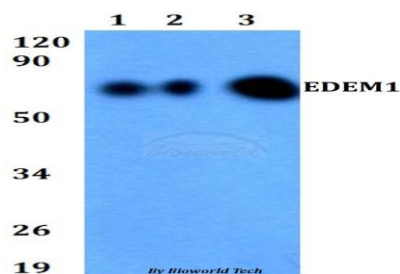
### Storage&Stability:

Store at 4 °C short term. Aliquot and store at -20 °C long term. Avoid freeze-thaw cycles.

### Specificity:

EDEM1 polyclonal antibody detects endogenous levels of EDEM1 protein.

### DATA:



Western blot (WB) analysis of EDEM1 polyclonal antibody at 1:500 dilution

Lane1:HEK293T whole cell lysate

Lane2:Raw264.7 whole cell lysate

Lane3:PC12 whole cell lysate

### Note:

For research use only, not for use in diagnostic procedure.

### Bioworld Technology, Inc.

Add: 1660 South Highway 100, Suite 500 St. Louis Park, MN 55416, USA.

Email: [info@bioworld.com](mailto:info@bioworld.com)

Tel: 6123263284

Fax: 6122933841

### Bioworld technology, co. Ltd.

Add: No 9, weidi road Qixia District Nanjing, 210046, P. R. China.

Email: [info@biogot.com](mailto:info@biogot.com)

Tel: 0086-025-68037686

Fax: 0086-025-68035151