

IDH2 polyclonal antibody

Catalog: BS60645

Host: Rabbit

Reactivity: Human, Mouse, Rat

BackGround:

IDH2 (isocitrate dehydrogenase 2 (NADP+), mitochondrial), also designated NADP+-specific ICDH; isocitrate dehydrogenase, mitochondrial; and oxalosuccinate decarboxylase, is a 452 amino acid enzyme encoded by the human gene IDH2. IDH2 belongs to the isocitrate and isopropylmalate dehydrogenases family and contains two nucleotide binding regions. IDH2 is involved in the reduction of NADP+ to NADPH and maintains the supply of glutathione (GSH) in mitochondria. It is believed to play a role in intermediary metabolism and energy production. IDH2 also tightly associates with the pyruvate dehydrogenase complex. IDH2 is found in the mitochondrion as a homodimer and can bind one magnesium or manganese ion per subunit.

Product:

1 mg/ml in Phosphate buffered saline (PBS) with 15 mM sodium azide, approx. pH 7.2.

Molecular Weight:

~ 51 kDa

Swiss-Prot:

P48735

Purification&Purity:

The antibody was affinity-purified from rabbit antiserum by affinity-chromatography using epitope-specific immunogen and the purity is > 95% (by SDS-PAGE).

Applications:

WB: 1:500~1:1000

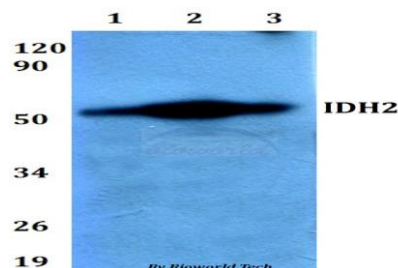
Storage&Stability:

Store at 4 °C short term. Aliquot and store at -20 °C long term. Avoid freeze-thaw cycles.

Specificity:

IDH2 polyclonal antibody detects endogenous levels of IDH2 protein.

DATA:



Western blot (WB) analysis of IDH2 polyclonal antibody at 1:500 dilution

Lane1: HEK293T whole cell lysate

Lane2: Raw264.7 whole cell lysate

Lane3: PC12 whole cell lysate

Note:

For research use only, not for use in diagnostic procedure.

Bioworld Technology, Inc.

Add: 1660 South Highway 100, Suite 500 St. Louis Park, MN 55416, USA.

Email: info@bioworld.com

Tel: 6123263284

Fax: 6122933841

Bioworld technology, co. Ltd.

Add: No 9, weidi road Qixia District Nanjing, 210046, P. R. China.

Email: info@biogot.com

Tel: 0086-025-68037686

Fax: 0086-025-68035151