

GPR143 polyclonal antibody

Catalog: BS60628

Host: Rabbit

Reactivity: Human, Mouse, Rat

BackGround:

G protein-coupled receptors (GPRs or GPCRs), are members of the largest protein family and play a role in many different stimulus-response pathways. G-protein coupled receptors mediate extracellular signals into intracellular signals (G-protein activation). They respond to a great variety of signaling molecules, including hormones, neurotransmitters and other proteins and peptides. GPR143, also designated ocular albinism type 1 protein (OA1), is detected exclusively in pigment cells. OA1, which is a multi-pass membrane protein, is a melanosomal protein expressed primarily in pigment cells. Defects in the gene encoding for OA1 cause ocular albinism, an X-linked disorder mainly characterized by retinal hypopigmentation and visual impairment.

Product:

1 mg/ml in Phosphate buffered saline (PBS) with 15 mM sodium azide, approx. pH 7.2.

Molecular Weight:

~ 44 kDa

Swiss-Prot:

P51810

Purification&Purity:

The antibody was affinity-purified from rabbit antiserum by affinity-chromatography using epitope-specific immunogen and the purity is > 95% (by SDS-PAGE).

Applications:

WB: 1:500~1:1000

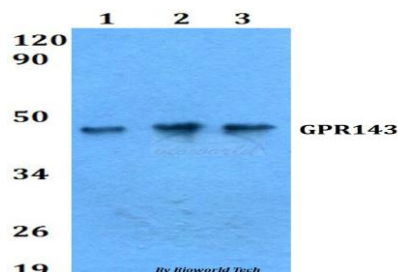
Storage&Stability:

Store at 4 °C short term. Aliquot and store at -20 °C long term. Avoid freeze-thaw cycles.

Specificity:

GPR143 polyclonal antibody detects endogenous levels of GPR143 protein.

DATA:



Western blot (WB) analysis of GPR143 polyclonal antibody at 1:500 dilution

Lane1:A549 whole cell lysate

Lane2:sp2/0 whole cell lysate

Lane3:PC12 whole cell lysate

Note:

For research use only, not for use in diagnostic procedure.

Bioworld Technology, Inc.

Add: 1660 South Highway 100, Suite 500 St. Louis Park, MN 55416, USA.

Email: info@bioworld.com

Tel: 6123263284

Fax: 6122933841

Bioworld technology, co. Ltd.

Add: No 9, weidi road Qixia District Nanjing, 210046, P. R. China.

Email: info@biogot.com

Tel: 0086-025-68037686

Fax: 0086-025-68035151