

## CTH polyclonal antibody

Catalog: BS60626

Host: Rabbit

Reactivity: Human, Mouse, Rat

### BackGround:

CTH (cystathionine  $\gamma$ -lyase), also known as CSE or  $\gamma$ -cystathionase, is a member of the trans-sulfuration enzyme family and participates in the trans-sulfuration pathway. CTH is a cytoplasmic enzyme produced in the cytosol and is responsible for catalyzing the pyridoxal phosphate-dependent  $\beta$ -disulfide elimination reaction resulting in ammonium, pyruvate and thiocysteine. The thiocysteine that is produced may then react with other thiols (or cysteine) and form hydrogen sulfide ( $H_2S$ ). Thus, CTH is the major  $H_2S$ -producing enzyme in kidney, liver, vascular smooth muscle cells and enterocytes. The endogenous production of  $H_2S$  plays a significant role in the regulation of cellular functions, including cell growth, hyperpolarization of cell membranes, modulation of neuronal excitability and relaxation of smooth muscle cells. Mutations in the gene encoding CTH can result in the autosomal recessive disease cystathioninuria; a disorder characterized by the unusual accumulation of plasma cystathionine causing increased urinary excretion.

### Product:

1 mg/ml in Phosphate buffered saline (PBS) with 15 mM sodium azide, approx. pH 7.2.

### Molecular Weight:

~ 44 kDa

### Swiss-Prot:

P32929

### Purification&Purity:

The antibody was affinity-purified from rabbit antiserum by affinity-chromatography using epitope-specific immunogen and the purity is > 95% (by SDS-PAGE).

### Applications:

WB: 1:500~1:1000

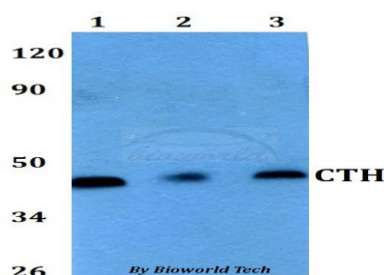
### Storage&Stability:

Store at 4 °C short term. Aliquot and store at -20 °C long term. Avoid freeze-thaw cycles.

### Specificity:

CTH polyclonal antibody detects endogenous levels of CTH protein.

### DATA:



Western blot (WB) analysis of CTH polyclonal antibody at 1:500 dilution

Lane1: HEK293T whole cell lysate

Lane2: Raw264.7 whole cell lysate

Lane3: PC12 whole cell lysate

### Note:

For research use only, not for use in diagnostic procedure.

### Bioworld Technology, Inc.

Add: 1660 South Highway 100, Suite 500 St. Louis Park, MN 55416, USA.

Email: [info@bioworld.com](mailto:info@bioworld.com)

Tel: 6123263284

Fax: 6122933841

### Bioworld technology, co. Ltd.

Add: No 9, weidi road Qixia District Nanjing, 210046, P. R. China.

Email: [info@biogot.com](mailto:info@biogot.com)

Tel: 0086-025-68037686

Fax: 0086-025-68035151