

## GALR1 polyclonal antibody

Catalog: BS60604

Host: Rabbit

Reactivity: Human, Mouse, Rat

### BackGround:

GALR1 (Galanin receptor, GALNR, GALNR1) is a G-protein-coupled receptor for the neuropeptide galanin that influences endocrine secretions, intestinal motility, memory, weight, and pain perception. GALR1 inhibits adenylyl cyclase via a G protein of the Gi/Go family. GALR1 is widely expressed in the brain and spinal cord, and in peripheral sites such as the small intestine and heart. The rat galanin receptor cDNA cloned from an insulinoma cell line is a predicted 346-amino acid G protein-coupled receptor with 92% homology to the human GALR1.

### Product:

1 mg/ml in Phosphate buffered saline (PBS) with 15 mM sodium azide, approx. pH 7.2.

### Molecular Weight:

~ 39 kDa

### Swiss-Prot:

P47211

### Purification&Purity:

The antibody was affinity-purified from rabbit antiserum by affinity-chromatography using epitope-specific immunogen and the purity is > 95% (by SDS-PAGE).

### Applications:

WB: 1:500~1:1000

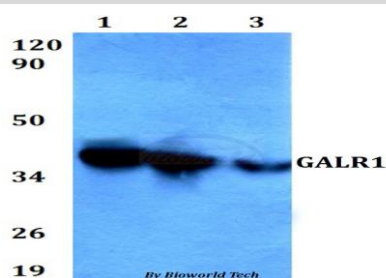
### Storage&Stability:

Store at 4 °C short term. Aliquot and store at -20 °C long term. Avoid freeze-thaw cycles.

### Specificity:

GALR1 polyclonal antibody detects endogenous levels of GALR1 protein.

### DATA:



Western blot (WB) analysis of GALR1 polyclonal antibody at 1:500 dilution

Lane1: HEK293T whole cell lysate

Lane2: sp2/0 whole cell lysate

Lane3: H9C2 whole cell lysate

### Note:

For research use only, not for use in diagnostic procedure.

### Bioworld Technology, Inc.

Add: 1660 South Highway 100, Suite 500 St. Louis Park, MN 55416, USA.

Email: [info@bioworld.com](mailto:info@bioworld.com)

Tel: 6123263284

Fax: 6122933841

### Bioworld technology, co. Ltd.

Add: No 9, weidi road Qixia District Nanjing, 210046, P. R. China.

Email: [info@biogot.com](mailto:info@biogot.com)

Tel: 0086-025-68037686

Fax: 0086-025-68035151