

RAB39B polyclonal antibody

Catalog: BS60551

Host: Rabbit

Reactivity: Human, Rat

BackGround:

RAB39B is a member of the Rab family of proteins. Rab proteins are small GTPases that are involved in vesicular trafficking.

Product:

1 mg/ml in Phosphate buffered saline (PBS) with 15 mM sodium azide, approx. pH 7.2.

Molecular Weight:

~ 25 kDa

Swiss-Prot:

Q96DA2

Purification&Purity:

The antibody was affinity-purified from rabbit antiserum by affinity-chromatography using epitope-specific immunogen and the purity is > 95% (by SDS-PAGE).

Applications:

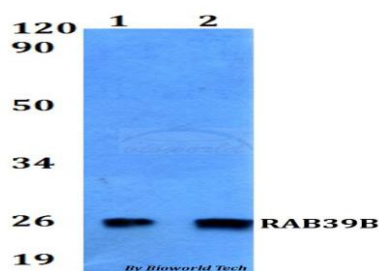
WB: 1:500~1:1000

Storage&Stability:

Store at 4 °C short term. Aliquot and store at -20 °C long term. Avoid freeze-thaw cycles.

Specificity:

RAB39B polyclonal antibody detects endogenous levels of RAB39B protein.

DATA:

Western blot (WB) analysis of RAB39B polyclonal antibody at 1:500 dilution

Lane1:MCF-7 whole cell lysate

Lane2:H9C2 whole cell lysate

Note:

For research use only, not for use in diagnostic procedure.

Bioworld Technology, Inc.

Add: 1660 South Highway 100, Suite 500 St. Louis Park, MN 55416, USA.

Email: info@bioworld.com

Tel: 6123263284

Fax: 6122933841

Bioworld technology, co. Ltd.

Add: No 9, weidi road Qixia District Nanjing, 210046, P. R. China.

Email: info@biogot.com

Tel: 0086-025-68037686

Fax: 0086-025-68035151