

NOX4 polyclonal antibody

Catalog: BS60435

Host: Rabbit

Reactivity: Human, Mouse, Rat

BackGround:

The superoxide-generating NADPH oxidase includes a membrane-bound flavocytochrome containing two subunits, gp91-phox and p22-phox, and the cytosolic proteins p47-phox and p67-phox. During activation of the NADPH oxidase, p47-phox and p67-phox migrate to the plasma membrane where they associate with the flavocytochrome, cytochrome b558, to form the active enzyme complex. The p22 and gp91-phox subunits also function as surface O₂ sensors that initiate cellular signaling in response to hypoxic conditions. Nox4 (also known as Renox) is a renal gp91-phox homolog highly expressed at the site of erythropoietin production in the proximal convoluted tubule epithelial cells of the renal cortex. Nox4 is also expressed in fetal tissues, placenta, glioblastoma and vascular cells. Like gp91-phox, the enzymatic activity of Nox4 produces superoxide anions. In vascular cells, the addition of Angiotensin II increases Nox4 expression, which suggests a role for Nox4 in vascular oxidative stress response. The gene encoding human Nox4 maps to chromosome 11q14.2-q21.

Product:

1mg/ml in PBS with 0.1% Sodium Azide, 50% Glycerol.

Molecular Weight:

~ 67 kDa

Swiss-Prot:

Q9NPH5

Purification&Purity:

The antibody was affinity-purified from rabbit antiserum by affinity-chromatography using epitope-specific im-

munogen and the purity is > 95% (by SDS-PAGE).

Applications:

WB: 1:500~1:1000

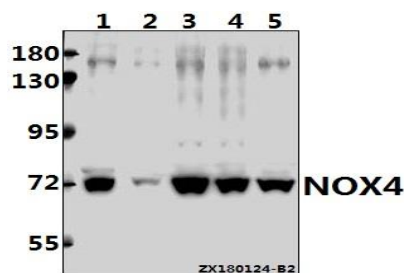
Storage&Stability:

Store at 4 °C short term. Aliquot and store at -20 °C long term. Avoid freeze-thaw cycles.

Specificity:

NOX4 polyclonal antibody detects endogenous levels of NOX4 protein.

DATA:



Western blot (WB) analysis of NOX4 pAb at 1:500 dilution

Lane1: HEK293T whole cell lysate(40ug)

Lane2: MCF-7 whole cell lysate(40ug)

Lane3: HepG2 whole cell lysate(40ug)

Lane4: PC12 whole cell lysate(40ug)

Lane5: AML-12 whole cell lysate(40ug)

Note:

For research use only, not for use in diagnostic procedure.

Bioworld Technology, Inc.

Add: 1660 South Highway 100, Suite 500 St. Louis Park, MN 55416, USA.

Email: info@bioworld.com

Tel: 6123263284

Fax: 6122933841

Bioworld technology, co. Ltd.

Add: No 9, weidi road Qixia District Nanjing, 210046, P. R. China.

Email: info@biogot.com

Tel: 0086-025-68037686

Fax: 0086-025-68035151