

## EB3 polyclonal antibody

Catalog: BS60423

Host: Rabbit

Reactivity: Human, Mouse, Rat

### BackGround:

EB1 (MAPRE2, microtubule-associated protein, RP/EB family, member 2, EB2, RP1) may influence tumorigenesis of colorectal cancers and proliferative control of normal cells. EB1 may belong to the intermediate/early gene family, involved in the signal transduction cascade downstream of the TCR. Colorectal cancer is caused by the pathologic transformation of normal colonic epithelium to an adenomatous polyp, which can become an invasive cancer. APC (adenomatous polyposis coli) is a tumor suppressor gene, the mutation of which is one of the earliest events in colorectal carcinogenesis. A majority of the mutations result in the loss of the carboxy terminus of APC. EB1 has been shown to bind to the carboxy terminal region of APC, which implicates EB1 in APC suppression of colonic cancer. EB1 overexpression may play a role in the development of human esophageal squamous cell carcinoma (ESCC) by affecting APC function and activating the beta-catenin/TCF pathway. EB3 is related to EB1 and likewise associates with the microtubule cytoskeleton. EB3 is expressed predominantly in the central nervous system and preferentially associates with APCL.

### Product:

1mg/ml in PBS with 0.1% Sodium Azide, 50% Glycerol.

### Molecular Weight:

~ 32 kDa

### Swiss-Prot:

Q9UPY8

### Purification&Purity:

The antibody was affinity-purified from rabbit antiserum by affinity-chromatography using epitope-specific immunogen and the purity is > 95% (by SDS-PAGE).

### Applications:

WB: 1:500~1:1000

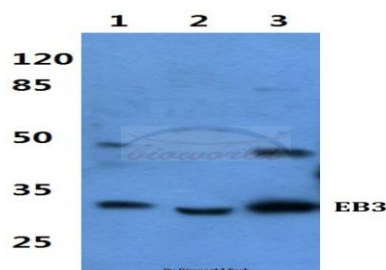
### Storage&Stability:

Store at 4 °C short term. Aliquot and store at -20 °C long term. Avoid freeze-thaw cycles.

### Specificity:

EB3 polyclonal antibody detects endogenous levels of EB3 protein.

### DATA:



Western blot (WB) analysis of EB3 polyclonal antibody at 1:500 dilution

Lane1:Hela cell lysate

Lane2:sp2/0 cell lysate

Lane3:PC12 cell lysate

### Note:

For research use only, not for use in diagnostic procedure.

### Bioworld Technology, Inc.

Add: 1660 South Highway 100, Suite 500 St. Louis Park, MN 55416, USA.

Email: [info@bioworld.com](mailto:info@bioworld.com)

Tel: 6123263284

Fax: 6122933841

### Bioworld technology, co. Ltd.

Add: No 9, weidi road Qixia District Nanjing, 210046, P. R. China.

Email: [info@biogot.com](mailto:info@biogot.com)

Tel: 0086-025-68037686

Fax: 0086-025-68035151