

## ADAM10 polyclonal antibody

Catalog: BS60338

Host: Rabbit

Reactivity: Human, Mouse

### Background:

ADAM (a disintegrin and metalloprotease) proteins are a family of over 30 membrane-anchored, glycosylated, Zn<sup>2+</sup> dependent proteases that are involved in cell-cell, cell-matrix interface related processes including fertilization, muscle fusion, secretion of TNF $\alpha$  (tumor necrosis factor  $\alpha$ ), and modulation of the neurogenic function of Notch and Delta. ADAM proteins possess a signal-domain, a pro-domain, a metalloprotease domain, a disintegrin domain (integrin ligand) a cysteine-rich region, an epidermal growth factor-like domain, a trans-membrane domain and a cytoplasmic tail. ADAMs are expressed in brain, testis, epididymis, ovary, breast, placenta, liver, heart, lung, bone and muscle, and catalyze proteolysis, adhesion, fusion and intracellular signaling. ADAM10 is a TNF-processing enzyme that cleaves pro-TNF, a membrane-bound precursor protein, at Ala 76-Val 77, which causes membrane shedding of soluble TNF.

### Product:

1mg/ml in PBS with 0.1% Sodium Azide, 50% Glycerol.

### Molecular Weight:

~ 75, 100 kDa

### Swiss-Prot:

O14672

### Purification&Purity:

The antibody was affinity-purified from rabbit antiserum by affinity-chromatography using epitope-specific immunogen and the purity is > 95% (by SDS-PAGE).

### Applications:

WB: 1:500~1:1000

IHC: 1:50~1:200

### Storage&Stability:

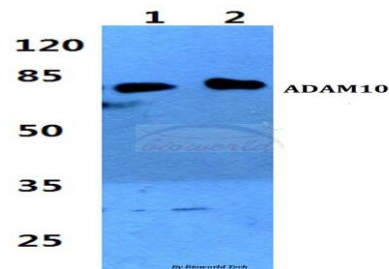
Store at 4 °C short term. Aliquot and store at -20 °C long

term. Avoid freeze-thaw cycles.

### Specificity:

ADAM10 polyclonal antibody detects endogenous levels of ADAM10 protein.

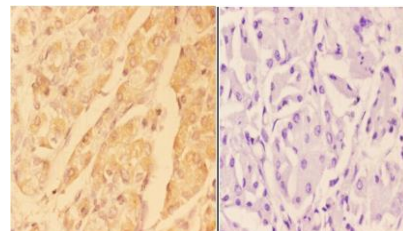
### DATA:



Western blot (WB) analysis of ADAM10 polyclonal antibody at 1:500 dilution

Lane1:HeLa cell lysate

Lane2:sp2/0 cell lysate



BS60338  
Lot:CN21141

Immunohistochemistry (IHC) analyzes of ADAM10 pAb in paraffin-embedded human stomach carcinoma tissue at 1:50, showing cytoplasmic and membrane staining. Negative control (the right) Using PBS instead of primary antibody, secondary antibody is Goat Anti-Rabbit IgG-biotin followed by avidin-peroxidase.

### Note:

For research use only, not for use in diagnostic procedure.

### Bioworld Technology, Inc.

Add: 1660 South Highway 100, Suite 500 St. Louis Park, MN 55416, USA.

Email: [info@bioworld.com](mailto:info@bioworld.com)

Tel: 6123263284

Fax: 6122933841

### Bioworld technology, co. Ltd.

Add: No 9, weidi road Qixia District Nanjing, 210046, P. R. China.

Email: [info@biogot.com](mailto:info@biogot.com)

Tel: 0086-025-68037686

Fax: 0086-025-68035151