

## Cyclin B3 polyclonal antibody

Catalog: BS60305

Host: Rabbit

Reactivity: Human, Mouse, Rat

### BackGround:

Cell proliferation is controlled at specific stages of the cell cycle by distinct protein kinase complexes. These complexes consist of a catalytic subunit associating with a specific regulatory subunit to form the active kinase. The cyclins, which include cyclin A, B, C, D, E, F, G, H, I, K, L, T and their related proteins, including Dbf4, comprise the regulatory subunits of these kinase complexes. The controlled activation of the kinase complexes at various intervals of the cell cycle is regulated by the availability of the cyclins to the catalytic subunit. Unlike the catalytic subunit, which is expressed continually, the expression and stability of the regulatory subunit fluctuates depending on the stage of the cell cycle, thereby regulating kinase activity. Cyclin B3, also known as CCNB3 or CYCB3, is a 1,395 amino acid nuclear protein that belongs to the cyclin family of regulatory proteins. Expressed in testis with lower expression in a variety of other tissues, cyclin B3 is thought to be required for early meiotic prophase I, playing an important role in the meiotic cell cycle. Three isoforms of cyclin B3 exist due to alternative splicing events.

### Product:

Rabbit IgG, 1mg/ml in PBS with 0.02% sodium azide, 50% glycerol, pH7.2

### Molecular Weight:

~ 158 kDa

### Swiss-Prot:

Q8WWL7

### Purification&Purity:

The antibody was affinity-purified from rabbit antiserum by affinity-chromatography using epitope-specific immunogen and the purity is > 95% (by SDS-PAGE).

### Applications:

WB: 1:500~1:1000

IF/ICC: 1:50~1:200

### Storage&Stability:

Store at 4 °C short term. Aliquot and store at -20 °C long term. Avoid freeze-thaw cycles.

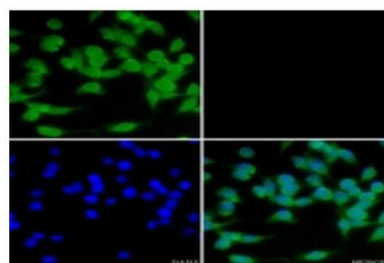
### Specificity:

Cyclin B3 polyclonal antibody detects endogenous levels of Cyclin B3 protein.

### DATA:



Western blot analysis of Cyclin B3 expression in rat brain (A), mouse liver (B) whole cell lysates.



Immunofluorescent analysis of Cyclin B3 staining in C6 cells.

### Note:

For research use only, not for use in diagnostic procedure.

### Bioworld Technology, Inc.

Add: 1660 South Highway 100, Suite 500 St. Louis Park, MN 55416, USA.

Email: [info@bioworld.com](mailto:info@bioworld.com)

Tel: 6123263284

Fax: 6122933841

### Bioworld technology, co. Ltd.

Add: No 9, weidi road Qixia District Nanjing, 210046, P. R. China.

Email: [info@biogot.com](mailto:info@biogot.com)

Tel: 0086-025-68037686

Fax: 0086-025-68035151