

Glut 2 polyclonal antibody

Catalog: BS60254

Host: Rabbit

Reactivity: Human, Rat

BackGround:

Glucose is fundamental to the metabolism of mammalian cells. Its passage across cell membranes is mediated by a family of transporters termed glucose transporters or Gluts. Glut1, Glut3 and Glut4 are high-affinity transporters, whereas Glut2 is a low-affinity transporter. In adipose and muscle tissue, insulin stimulates a rapid and dramatic increase in glucose uptake, which is largely due to the redistribution of the insulin-inducible glucose transporter Glut4. In response to insulin, Glut4 is quickly shuttled from an intracellular storage site to the plasma membrane, where it binds glucose. In contrast, the ubiquitously expressed glucose transporter Glut1 is constitutively targeted to the plasma membrane and shows a much less dramatic translocation in response to insulin. Glut2 expression is seen in pancreatic beta cells, hepatocytes and basolateral membranes of intestinal and epithelial cells, while the highest expression of Glut3 has been found in neuronal tissue.

Product:

1 mg/ml in Phosphate buffered saline (PBS) with 0.05% sodium azide, approx. pH 7.2.

Molecular Weight:

~ 57 kDa

Swiss-Prot:

P11168

Purification&Purity:

The antibody was affinity-purified from rabbit antiserum by affinity-chromatography using epitope-specific im-

munogen and the purity is > 95% (by SDS-PAGE).

Applications:

WB: 1:500~1:1000

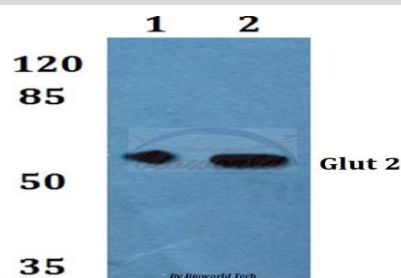
Storage&Stability:

Store at 4 °C short term. Aliquot and store at -20 °C long term. Avoid freeze-thaw cycles.

Specificity:

Glut 2 polyclonal antibody detects endogenous levels of Glut 2 protein.

DATA:



Western blot (WB) analysis of Glut 2 polyclonal antibody at 1:500 dilution

Lane1:HEK293T whole cell lysate

Lane2:Rat kidney tissue lysate

Note:

For research use only, not for use in diagnostic procedure.

Bioworld Technology, Inc.

Add: 1660 South Highway 100, Suite 500 St. Louis Park, MN 55416, USA.

Email: info@bioworld.com

Tel: 6123263284

Fax: 6122933841

Bioworld technology, co. Ltd.

Add: No 9, weidi road Qixia District Nanjing, 210046, P. R. China.

Email: info@biogot.com

Tel: 0086-025-68037686

Fax: 0086-025-68035151