

ICAM-5 polyclonal antibody

Catalog: BS60166

Host: Rabbit

Reactivity: Human, Rat, Mouse

BackGround:

Cell adhesion molecules are a family of closely related cell surface glycoproteins involved in cell-cell interactions during growth and are thought to play important, yet separate, roles in embryogenesis and development. The intracellular adhesion molecule-1 (ICAM-1), also referred to as CD54, is an integral membrane protein of the immunoglobulin superfamily and recognizes the $\beta 2\alpha 1$ and $\beta 2\alpha M$ integrins. ICAM-2 functions as a ligand for lymphocyte function-associated antigen-1 (LFA-1) and is involved in leukocyte adhesion. ICAM-3 is highly expressed on the surface of human eosinophils, and when bound to ligand may inhibit eosinophil inflammatory responses and survival. ICAM-4, also known as LW glycoprotein, interacts with the integrins $\alpha L\beta 2$, $\alpha M\beta 2$, $\alpha 4\beta 1$, the αV family and $\alpha IIb\beta 3$, and selective binding to different integrins may be relevant to the pathology in a number of red blood cell associated diseases. Lastly, ICAM-5, expressed on telencephalic neurons, binds CD11a/CD18 and thus may act as an adhesion molecule for leukocyte binding in the central nervous system.

Product:

Rabbit IgG, 1mg/ml in PBS with 0.02% sodium azide, 50% glycerol, pH7.2.

Molecular Weight:

~ 180 kDa

Swiss-Prot:

Q9UMF0

Purification&Purity:

The antibody was affinity-purified from rabbit antiserum

by affinity-chromatography using epitope-specific immunogen and the purity is > 95% (by SDS-PAGE).

Applications:

WB: 1:1000~1:2000

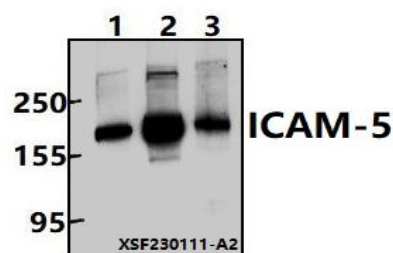
Storage&Stability:

Store at 4 °C short term. Aliquot and store at -20 °C long term. Avoid freeze-thaw cycles.

Specificity:

ICAM-5 polyclonal antibody detects endogenous levels of ICAM-5 protein.

DATA:



Western blot (WB) analysis of ICAM-5 polyclonal antibody at 1:1000 dilution

Lane1:Hela whole cell lysate(30ug)

Lane2:C6 whole cell lysate(30ug)

Lane3:BV2 whole cell lysate(30ug)

Note:

For research use only, not for use in diagnostic procedure.

Bioworld Technology, Inc.

Add: 1660 South Highway 100, Suite 500 St. Louis Park, MN 55416, USA.

Email: info@bioworld.com

Tel: 6123263284

Fax: 6122933841

Bioworld technology, co. Ltd.

Add: No 9, weidi road Qixia District Nanjing, 210046, P. R. China.

Email: info@biogot.com

Tel: 0086-025-68037686

Fax: 0086-025-68035151