

## Claudin-9 polyclonal antibody

Catalog: BS60134

Host: Rabbit

Reactivity: Human, Mouse, Rat

### BackGround:

The claudin superfamily consists of many structurally related proteins in humans. These proteins are important structural and functional components of tight junctions in paracellular transport. Claudins are located in both epithelial and endothelial cells in all tight junction-bearing tissues. Three classes of proteins are known to localize to tight junctions, including the claudins, Occludin and junction adhesion molecule. Claudins, which consist of four transmembrane domains and two extracellular loops make up tight junction strands. Claudin expression is often highly restricted to specific regions of different tissues and may have an important role in transcellular transport through tight junctions. Claudin-9 is highly similar to claudin-3 (also designated clostridium perfringens enterotoxin receptor). Claudin-9 is expressed in simian virus (SV)40-immortalized human corneal epithelial (THCE) cells.

### Product:

1mg/ml in PBS with 0.1% Sodium Azide, 50% Glycerol.

### Molecular Weight:

~ 23 kDa

### Swiss-Prot:

O95484

### Purification&Purity:

The antibody was affinity-purified from rabbit antiserum by affinity-chromatography using epitope-specific immunogen and the purity is > 95% (by SDS-PAGE).

### Applications:

WB: 1:500~1:1000

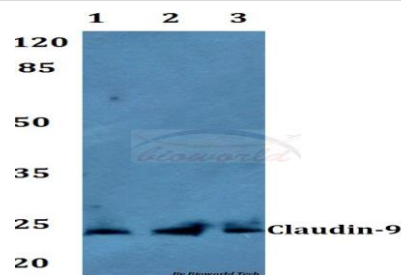
### Storage&Stability:

Store at 4 °C short term. Aliquot and store at -20 °C long term. Avoid freeze-thaw cycles.

### Specificity:

Claudin-9 polyclonal antibody detects endogenous levels of Claudin-9 protein.

### DATA:



Western blot (WB) analysis of Claudin-9 polyclonal antibody at 1:500 dilution

Lane1:A549 whole cell lysate

Lane2:Raw264.7 whole cell lysate

Lane3:PC12 whole cell lysate

### Note:

For research use only, not for use in diagnostic procedure.

### Bioworld Technology, Inc.

Add: 1660 South Highway 100, Suite 500 St. Louis Park, MN 55416, USA.

Email: [info@bioworld.com](mailto:info@bioworld.com)

Tel: 6123263284

Fax: 6122933841

### Bioworld technology, co. Ltd.

Add: No 9, weidi road Qixia District Nanjing, 210046, P. R. China.

Email: [info@biogot.com](mailto:info@biogot.com)

Tel: 0086-025-68037686

Fax: 0086-025-68035151