

AP2M1 polyclonal antibody

Catalog: BS60101

Host: Rabbit

Reactivity: Human, Mouse, Rat

BackGround:

Adaptins are heterotetrameric subunits of adaptors, which are complexes involved in the formation of Clathrin-coated pits for vesicle-mediated endocytosis. Clathrin and its associated heterotetrameric protein complexes make up the main protein components of the coat surrounding the cytoplasmic face of coated vesicles. The Adaptin family, comprising a, b, b' and g classes, is also responsible for the transport of ligand-receptor complexes from plasma membranes and the trans-Golgi network to lysosomes. Two main types of adaptor proteins (APs), AP-1 and AP-2, are found in Clathrin-coated structures located at the Golgi complex and the plasma membrane of mammalian cells, respectively. Adaptor protein complex 2 (AP-2) is composed of two large Adaptins (a1A/AP2A1 and b1/AP2B1), a medium Adaptin (m2/AP-2m1) and a small Adaptin (s2 long/AP2S1). AP-2m1, a 435 amino acid protein, links Clathrin to receptors in coated vesicles.

Product:

1mg/ml in PBS with 0.1% Sodium Azide, 50% Glycerol.

Molecular Weight:

~ 50 kDa

Swiss-Prot:

Q96CW1

Purification&Purity:

The antibody was affinity-purified from rabbit antiserum by affinity-chromatography using epitope-specific immunogen and the purity is > 95% (by SDS-PAGE).

Applications:

WB: 1:500~1:1000

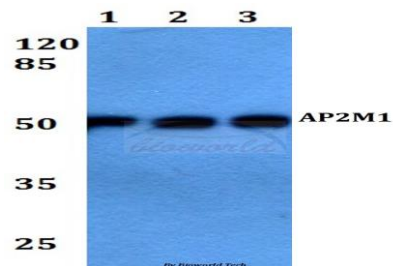
Storage&Stability:

Store at 4 °C short term. Aliquot and store at -20 °C long term. Avoid freeze-thaw cycles.

Specificity:

AP2M1 polyclonal antibody detects endogenous levels of AP2M1 protein.

DATA:



Western blot (WB) analysis of AP2M1 polyclonal antibody at 1:500 dilution

Lane1:MCF-7 whole cell lysate

Lane2:Mouse brain tissue lysate

Lane3:Rat brain tissue lysate

Note:

For research use only, not for use in diagnostic procedure.

Bioworld Technology, Inc.

Add: 1660 South Highway 100, Suite 500 St. Louis Park, MN 55416, USA.

Email: info@bioworld.com

Tel: 6123263284

Fax: 6122933841

Bioworld technology, co. Ltd.

Add: No 9, weidi road Qixia District Nanjing, 210046, P. R. China.

Email: info@biogol.com

Tel: 0086-025-68037686

Fax: 0086-025-68035151