

## CIB1 polyclonal antibody

Catalog: BS60061

Host: Rabbit

Reactivity: Human, Rat

### BackGround:

Platelets regulate the function of Integrin  $\alpha 2b/\beta 3$  (GPIIb/IIIa), the platelet Fibrinogen receptor, which is involved in the binding of proteins to integrin cytoplasmic domains. A novel protein, CIB, for calcium- and integrin-binding protein (also designated as Kip for kinase interacting protein, SIP2-28 and DNA-PKcs interacting protein), binds specifically at the cytoplasmic domain of  $\alpha 2b$  by a number of positively charged residues in its binding site. Binding of CIB to the  $\alpha 2b$  is affected by fluctuations in the intracellular calcium concentration. In aggregated platelets, endogenous CIB and  $\alpha 2b/\beta 3$  translocate to the Triton X-100-insoluble cytoskeleton, demonstrating that the cellular localization of CIB is regulated. CIB also binds to DNA-PKcs, which is a nuclear protein serine/threonine kinase that plays a role in the DNA repair and recombination process of lymphoid development. Fnk also binds to the CIB, suggesting that CIB may be a regulatory subunit of polo-like kinases. CIB shows significant homology to calcineurin B and calmodulin, and its mRNA levels are ubiquitously expressed in various human tissues.

### Product:

1mg/ml in PBS with 0.1% Sodium Azide, 50% Glycerol.

### Molecular Weight:

~ 22 kDa

### Swiss-Prot:

Q99828

### Purification&Purity:

The antibody was affinity-purified from rabbit antiserum by affinity-chromatography using epitope-specific immunogen and the purity is > 95% (by SDS-PAGE).

### Applications:

WB: 1:500~1:1000

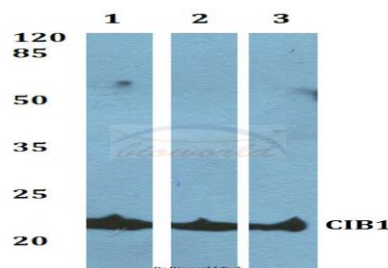
### Storage&Stability:

Store at 4 °C short term. Aliquot and store at -20 °C long term. Avoid freeze-thaw cycles.

### Specificity:

CIB1 polyclonal antibody detects endogenous levels of CIB1 protein.

### DATA:



Western blot (WB) analysis of CIB1 polyclonal antibody at 1:500 dilution

Lane1:HEK293T whole cell lysate

Lane2:H9C2 whole cell lysate

Lane3:Rat brain tissue lysate

### Note:

For research use only, not for use in diagnostic procedure.

### Bioworld Technology, Inc.

Add: 1660 South Highway 100, Suite 500 St. Louis Park, MN 55416, USA.

Email: [info@bioworld.com](mailto:info@bioworld.com)

Tel: 6123263284

Fax: 6122933841

### Bioworld technology, co. Ltd.

Add: No 9, weidi road Qixia District Nanjing, 210046, P. R. China.

Email: [info@biogot.com](mailto:info@biogot.com)

Tel: 0086-025-68037686

Fax: 0086-025-68035151