

ABCA1 polyclonal antibody

Catalog: BS60011

Host: Rabbit

Reactivity: Human, Mouse, Rat

BackGround:

ABC1 (for ATP-binding cassette transporter 1) is a member of the family of ATP-binding cassette proteins which transport various molecules across biological membranes. ABC1 contains two characteristic ATP-binding domains and 12 transmembrane domains which form a channel-like structure for transport. Mutations in the ABC1 gene are implicated in Tangier disease, characterized by low serum high density lipoprotein. ABC1 is widely expressed in human tissues, with high levels of expression in liver, lung, adrenal glands, placenta and fetal tissue. ABC1 expression is induced during monocyte differentiation and upregulated in the presence of acetylated low-density lipoprotein. ABC1 may have a dual regulatory function in macrophage lipid metabolism and inflammation.

Product:

1 mg/ml in Phosphate buffered saline (PBS) with 0.05% sodium azide, approx. pH 7.2.

Molecular Weight:

~ 254 kDa

Swiss-Prot:

O95477

Purification&Purity:

The antibody was affinity-purified from rabbit antiserum by affinity-chromatography using epitope-specific immunogen and the purity is > 95% (by SDS-PAGE).

Applications:

WB: 1:500~1:1000

IHC: 1:50~1:200

Storage&Stability:

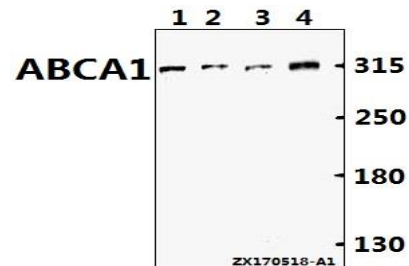
Store at 4 °C short term. Aliquot and store at -20 °C long term. Avoid freeze-thaw cycles.

Specificity:

ABCA1 polyclonal antibody detects endogenous levels of

ABCA1 protein.

DATA:



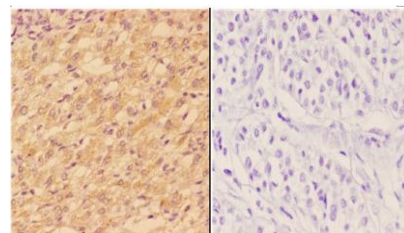
Western blot (WB) analysis of ABCA1 polyclonal antibody at 1:500 dilution

Lane1:C6 whole cell lysate(40ug)

Lane2:AML-12 whole cell lysate(40ug)

Lane3:HEK293T whole cell lysate(40ug)

Lane4:HepG2 whole cell lysate(40ug)



BS60011
Lot CN21141

Immunohistochemistry (IHC) analyzes of ABCA1 pAb in paraffin-embedded human liver carcinoma tissue at 1:50, showing cytoplasmic and membrane staining. Negative control (the right) Using PBS instead of primary antibody, secondary antibody is Goat Anti-Rabbit IgG-biotin followed by avidin-peroxidase.

Note:

For research use only, not for use in diagnostic procedure.

Bioworld Technology, Inc.

Add: 1660 South Highway 100, Suite 500 St. Louis Park, MN 55416, USA.

Email: info@bioworld.com

Tel: 6123263284

Fax: 6122933841

Bioworld technology, co. Ltd.

Add: No 9, weidi road Qixia District Nanjing, 210046, P. R. China.

Email: info@biogot.com

Tel: 0086-025-68037686

Fax: 0086-025-68035151