

## ARHGDIG polyclonal antibody

Catalog: BS5899

Host: Rabbit

Reactivity: Human, Mouse

### BackGround:

The Ras superfamily of small GTP-binding proteins are critical mediators of diverse cell signaling pathways, including those leading to proliferation, cytoskeletal organization and secretion. The counter-conversion of the active GTP-bound form of these proteins to their inactive GDP-bound form is influenced by two types of regulatory proteins: those that alter the intrinsic GTPase activity of the GTP-binding proteins and those that alter the rate of GDP/GTP exchange. Guanine nucleotide-releasing factors (GRFs) increase the GDP dissociation rate, while GDP-dissociation inhibitors (GDIs) decrease the dissociation rate. The Rho GDI subfamily is composed of Rho GDI $\alpha$ , Ly-GDI (also known as Rho GDI $\beta$  and previously known as GDI/D4) and Rho GDI $\gamma$ . The Rho GDI proteins interact with and have varying affinities for several Ras-like GTP binding proteins, including Rho A, Rho B, Rac and Cdc42. Ly-GDI is expressed only in hematopoietic cells, predominantly in B and T lymphocyte cell lines.

### Product:

1 mg/ml in Phosphate buffered saline (PBS) with 0.05% sodium azide, approx. pH 7.2.

### Molecular Weight:

~ 25 kDa

### Swiss-Prot:

Q99819

### Purification&Purity:

The antibody was affinity-purified from rabbit antiserum by affinity-chromatography using epitope-specific im-

munogen and the purity is > 95% (by SDS-PAGE).

### Applications:

WB: 1:500~1:1000

ICC: 1:50~1:200

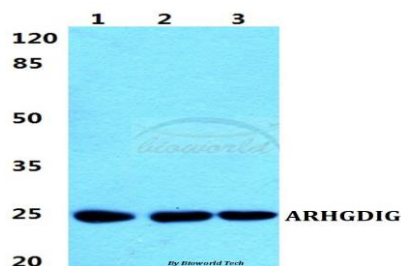
### Storage&Stability:

Store at 4 °C short term. Aliquot and store at -20 °C long term. Avoid freeze-thaw cycles.

### Specificity:

ARHGDIG polyclonal antibody detects endogenous levels of ARHGDIG protein.

### DATA:



Western blot (WB) analysis of ARHGDIG polyclonal antibody at 1:500 dilution

Lane1: Jurkat cell lysate

Lane2: Hela cell lysate

Lane3: Raw264.7 cell lysate

### Note:

For research use only, not for use in diagnostic procedure.

### Bioworld Technology, Inc.

Add: 1660 South Highway 100, Suite 500 St. Louis Park, MN 55416, USA.

Email: [info@bioworld.com](mailto:info@bioworld.com)

Tel: 6123263284

Fax: 6122933841

### Bioworld technology, co. Ltd.

Add: No 9, weidi road Qixia District Nanjing, 210046, P. R. China.

Email: [info@biogot.com](mailto:info@biogot.com)

Tel: 0086-025-68037686

Fax: 0086-025-68035151