

ANP32C polyclonal antibody

Catalog: BS5864

Host: Rabbit

Reactivity: Human, Mouse, Rat

BackGround:

ANP32C (acidic (leucine-rich) nuclear phosphoprotein 32 family, member C), also known as PP32R1 (phosphoprotein 32-related protein 1) or tumorigenic protein pp32r1, is a 234 amino acid protein that contains 4 leucine-rich repeats and belongs to the ANP32 family. ANP32C shares 87.7% amino acid sequence identity with ANP32A, a tumor suppressor that inhibits a variety of cancers, such as prostate and breast cancers. Although similar to ANP32A, ANP32C is tumorigenic and is expressed in activated stem cells, such as mobilized CD34+ cells and cord blood CD34+ cells, but not in resting bone marrow CD34+ cells. ANP32C is also expressed in a variety of neoplastic cell lines, mainly in prostatic adenocarcinoma cell lines, but not in normal prostatic tissue, and may also modulate the oncogenic potential of human prostate cancer.

Product:

1 mg/ml in Phosphate buffered saline (PBS) with 0.05% sodium azide, approx. pH 7.2.

Molecular Weight:

~ 27 kDa

Swiss-Prot:

O43423

Purification&Purity:

The antibody was affinity-purified from rabbit antiserum by affinity-chromatography using epitope-specific immunogen and the purity is > 95% (by SDS-PAGE).

Applications:

WB: 1:500~1:1000

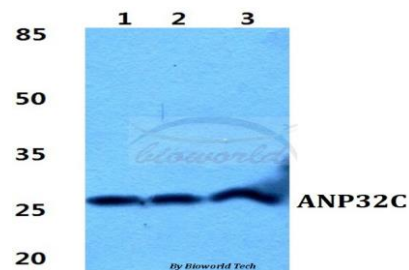
Storage&Stability:

Store at 4 °C short term. Aliquot and store at -20 °C long term. Avoid freeze-thaw cycles.

Specificity:

ANP32C polyclonal antibody detects endogenous levels of ANP32C protein.

DATA:



Western blot (WB) analysis of ANP32C polyclonal antibody at 1:500 dilution

Lane1:Hela cell lysate

Lane2:sp2/0 cell lysate

Lane3:H9C2 cell lysate

Note:

For research use only, not for use in diagnostic procedure.

Bioworld Technology, Inc.

Add: 1660 South Highway 100, Suite 500 St. Louis Park, MN 55416, USA.

Email: info@bioworld.com

Tel: 6123263284

Fax: 6122933841

Bioworld technology, co. Ltd.

Add: No 9, weidi road Qixia District Nanjing, 210046, P. R. China.

Email: info@biogot.com

Tel: 0086-025-68037686

Fax: 0086-025-68035151