

HLA-DOB polyclonal antibody

Catalog: BS5758

Host: Rabbit

Reactivity: Human, Mouse, Rat

BackGround:

Peptide (antigen) binding to major histocompatibility complex (MHC) class II molecules destined for presentation to CD4⁺ helper T cells is determined by two key events. These include the dissociation of class II-associated invariant chain peptides (CLIP) from an antigen binding groove in MHC II-Ig dimers and by the activity of MHC molecules HLA-DM and -DO. Accumulating in endosomal/lysosomal compartments and on the surface of B cells, HLA-DM, -DO molecules regulate the dissociation of CLIP and the subsequent binding of exogenous peptides to HLA class II molecules (HLA-DR) by sustaining a conformation that favors peptide exchange. RFLP analysis of HLA-DM genes from rheumatoid arthritis (RA) patients suggests that certain polymorphisms are genetic factors for RA susceptibility.

Product:

1mg/ml in PBS with 0.1% Sodium Azide, 50% Glycerol.

Molecular Weight:

~ 31 kDa

Swiss-Prot:

P13765

Purification&Purity:

The antibody was affinity-purified from rabbit antiserum by affinity-chromatography using epitope-specific immunogen and the purity is > 95% (by SDS-PAGE).

Applications:

WB: 1:500~1:1000

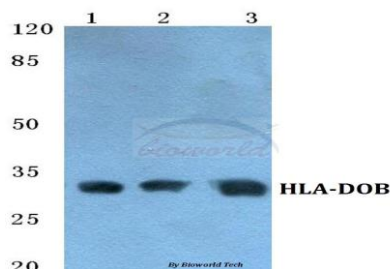
Storage&Stability:

Store at 4 °C short term. Aliquot and store at -20 °C long term. Avoid freeze-thaw cycles.

Specificity:

HLA-DOB polyclonal antibody detects endogenous levels of HLA-DOB protein.

DATA:



Western blot (WB) analysis of HLA-DOB polyclonal antibody at 1:500 dilution

Lane1:Hela cell lysate

Lane2:Raw264.7 cell lysate

Lane3:H9C2 cell lysate

Note:

For research use only, not for use in diagnostic procedure.

Bioworld Technology, Inc.

Add: 1660 South Highway 100, Suite 500 St. Louis Park, MN 55416, USA.

Email: info@bioworld.com

Tel: 6123263284

Fax: 6122933841

Bioworld technology, co. Ltd.

Add: No 9, weidi road Qixia District Nanjing, 210046, P. R. China.

Email: info@biogot.com

Tel: 0086-025-68037686

Fax: 0086-025-68035151