

GPR15 polyclonal antibody

Catalog: BS5740

Host: Rabbit

Reactivity: Human, Mouse, Rat

BackGround:

G protein-coupled receptors (GPRs), also known as seven transmembrane receptors, heptahelical receptors or 7TM receptors, comprise a superfamily of proteins that play a role in many different stimulus-response pathways. G protein-coupled receptors translate extracellular signals into intracellular signals (G protein-activation) and they respond to a variety of signaling molecules, such as hormones and neurotransmitters. GPR15 (G protein-coupled receptor 15) is a 360 amino acid multi-pass membrane protein belonging to the G protein-coupled receptor 1 family. GPR15 is thought to function as a chemokine receptor and is encoded by a gene that maps to murine chromosome 16 C1.2.

Product:

1mg/ml in PBS with 0.1% Sodium Azide, 50% Glycerol.

Molecular Weight:

~ 41 kDa

Swiss-Prot:

P49685

Purification&Purity:

The antibody was affinity-purified from rabbit antiserum by affinity-chromatography using epitope-specific immunogen and the purity is > 95% (by SDS-PAGE).

Applications:

WB: 1:500~1:1000

IF: 1:50~1:200

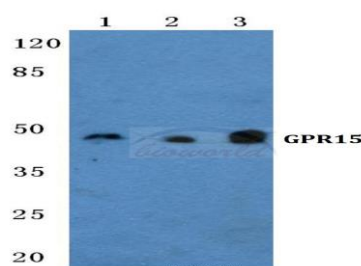
Storage&Stability:

Store at 4 °C short term. Aliquot and store at -20 °C long term. Avoid freeze-thaw cycles.

Specificity:

GPR15 polyclonal antibody detects endogenous levels of GPR15 protein.

DATA:



Western blot (WB) analysis of GPR15 polyclonal antibody at 1:500 dilution

Lane1:Hela cell lysate

Lane2:Raw264.7 cell lysate

Lane3:H9C2 cell lysate

Note:

For research use only, not for use in diagnostic procedure.

Bioworld Technology, Inc.

Add: 1660 South Highway 100, Suite 500 St. Louis Park, MN 55416, USA.

Email: info@bioworld.com

Tel: 6123263284

Fax: 6122933841

Bioworld technology, co. Ltd.

Add: No 9, weidi road Qixia District Nanjing, 210046, P. R. China.

Email: info@biogol.com

Tel: 0086-025-68037686

Fax: 0086-025-68035151