

Fibulin-2 polyclonal antibody

Catalog: BS5718

Host: Rabbit

Reactivity: Human, Mouse, Rat

BackGround:

Fibulin-1 and Fibulin-2 associate with Fibronectin and other extracellular matrix proteins. In bone marrow, Fibulin-1 and Fibulin-2 bind to Fibronectin in the adherent layer. Fibulin-1 expression is stimulated by estrogen in ovarian cancer cell lines and has been suggested as both an agent of metastasis in ovarian cancer cells and as an indicator for predicting cancer risk or aggressiveness in ovarian carcinomas. The mobility of cancer cells may be inhibited with increasing exposure to Fibulin-1. Fibulin-2 binds to the lectin domains of extracellular matrix proteins aggrecan, versican and brevican. Fibulin-2 is abundantly expressed in heart, placenta and ovarian tissue, where it localizes to basement membranes and connective tissue compartments. In mice, differential Fibulin-2 gene expression correlates with the early phase of diabetic kidneys and glomerulosclerosis.

Product:

1 mg/ml in Phosphate buffered saline (PBS) with 0.05% sodium azide, approx. pH 7.2.

Molecular Weight:

~ 126, 195 kDa

Swiss-Prot:

P98095

Purification&Purity:

The antibody was affinity-purified from rabbit antiserum by affinity-chromatography using epitope-specific immunogen and the purity is > 95% (by SDS-PAGE).

Applications:

WB: 1:500~1:1000

IF: 1:50~1:200

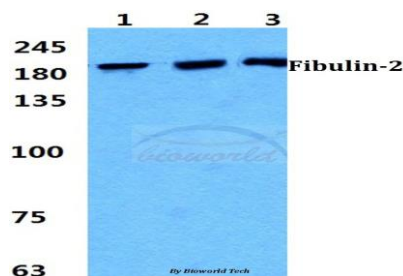
Storage&Stability:

Store at 4 °C short term. Aliquot and store at -20 °C long term. Avoid freeze-thaw cycles.

Specificity:

Fibulin-2 polyclonal antibody detects endogenous levels of Fibulin-2 protein.

DATA:



Western blot (WB) analysis of Fibulin-2 polyclonal antibody at 1:500 dilution

Lane1:Hela cell lysate

Lane2:sp2/0 cell lysate

Lane3:H9C2 cell lyate

Note:

For research use only, not for use in diagnostic procedure.

Bioworld Technology, Inc.

Add: 1660 South Highway 100, Suite 500 St. Louis Park, MN 55416, USA.

Email: info@bioworld.com

Tel: 6123263284

Fax: 6122933841

Bioworld technology, co. Ltd.

Add: No 9, weidi road Qixia District Nanjing, 210046, P. R. China.

Email: info@biogot.com

Tel: 0086-025-68037686

Fax: 0086-025-68035151