

## EWSR1 polyclonal antibody

Catalog: BS5715

Host: Rabbit

Reactivity: Human, Mouse, Rat

### BackGround:

EWS is a nuclear RNA-binding protein. As a result of chromosome translocation, the EWS gene is fused to a variety of transcription factors, including ATF-1 in human neoplasias. In the Ewing family of tumors, the N-terminal domain of EWS is fused to the DNA-binding domain of various ETS transcription factors, including Fli-1, Erg, ETV1, E1AF and FEV. The EWS/Fli-1 chimeric protein acts as a more potent transcriptional activator than Fli-1 and can promote cell transformation. Two functional regions have been identified in EWS; an amino-terminal region (domain A), that has little transactivation activity but transforms efficiently when fused to Fli-1, and a distal region (domain B), which shows transactivation activity but transforms less efficiently when fused to Fli-1.

### Product:

1mg/ml in PBS with 0.1% Sodium Azide, 50% Glycerol.

### Molecular Weight:

~ 68, 90 kDa

### Swiss-Prot:

Q01844

### Purification&Purity:

The antibody was affinity-purified from rabbit antiserum by affinity-chromatography using epitope-specific immunogen and the purity is > 95% (by SDS-PAGE).

### Applications:

WB: 1:500~1:1000

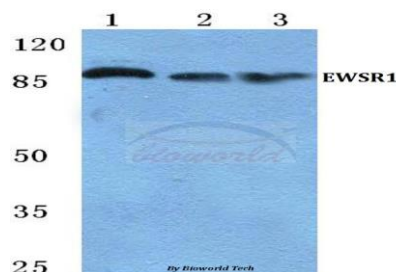
### Storage&Stability:

Store at 4 °C short term. Aliquot and store at -20 °C long term. Avoid freeze-thaw cycles.

### Specificity:

EWSR1 polyclonal antibody detects endogenous levels of EWSR1 protein.

### DATA:



Western blot (WB) analysis of EWSR1 polyclonal antibody at 1:500 dilution

Lane1:A549 cell lysate

Lane2:Raw264.7 cell lysate

Lane3:H9C2 cell lysate

### Note:

For research use only, not for use in diagnostic procedure.

### Bioworld Technology, Inc.

Add: 1660 South Highway 100, Suite 500 St. Louis Park, MN 55416, USA.

Email: [info@bioworld.com](mailto:info@bioworld.com)

Tel: 6123263284

Fax: 6122933841

### Bioworld technology, co. Ltd.

Add: No 9, weidi road Qixia District Nanjing, 210046, P. R. China.

Email: [info@biogol.com](mailto:info@biogol.com)

Tel: 0086-025-68037686

Fax: 0086-025-68035151