

ELMO1 polyclonal antibody

Catalog: BS5711

Host: Rabbit

Reactivity: Human, Mouse, Rat

BackGround:

Elmo (engulfment and cell motility) proteins share similarity to *C. elegans* CED-12. The *C. elegans* genes ced-2, ced-5, ced-10 and ced-12, and their mammalian homologs, CRKII, DOCK1, RAC1 and ELMO, mediate cytoskeletal rearrangements during phagocytosis of apoptotic cells as well as cell motility. Elmo1 associates with DOCK 180 and may influence phagocytosis and effect cell shape changes. Src family kinase-mediated tyrosine phosphorylation of Elmo1 influences signaling through Elmo1/Crk/DOCK 180 pathways. Elmo2 interacts directly with Rho G in a GTP-dependent manner and forms a ternary complex with DOCK 180 to induce activation of Rac 1. The Rho G-Elmo2-DOCK 180 pathway is required for activation of Rac 1 and cell spreading mediated by integrin, as well as for neurite outgrowth induced by nerve growth factor. Elmo3 acts in association with DOCK 180 and Crk II and may be required in complex with DOCK 180 to activate Rac/Rho small GTPases.

Product:

1mg/ml in PBS with 0.1% Sodium Azide, 50% Glycerol.

Molecular Weight:

~ 84 kDa

Swiss-Prot:

Q92556

Purification&Purity:

The antibody was affinity-purified from rabbit antiserum by affinity-chromatography using epitope-specific im-

munogen and the purity is > 95% (by SDS-PAGE).

Applications:

WB: 1:500~1:1000

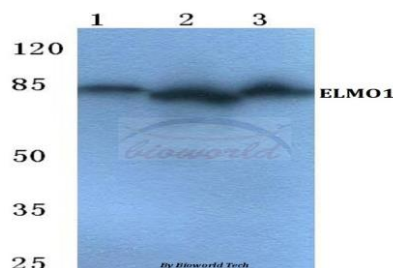
Storage&Stability:

Store at 4 °C short term. Aliquot and store at -20 °C long term. Avoid freeze-thaw cycles.

Specificity:

ELMO1 polyclonal antibody detects endogenous levels of ELMO1 protein.

DATA:



Western blot (WB) analysis of ELMO1 polyclonal antibody at 1:500 dilution

Lane1:MCF-7 cell lysate

Lane2:sp2/0 cell lysate

Lane3:Rat brain tissue lysate

Note:

For research use only, not for use in diagnostic procedure.

Bioworld Technology, Inc.

Add: 1660 South Highway 100, Suite 500 St. Louis Park, MN 55416, USA.

Email: info@bioworld.com

Tel: 6123263284

Fax: 6122933841

Bioworld technology, co. Ltd.

Add: No 9, weidi road Qixia District Nanjing, 210046, P. R. China.

Email: info@biogot.com

Tel: 0086-025-68037686

Fax: 0086-025-68035151