

EEA1 polyclonal antibody

Catalog: BS5707

Host: Rabbit

Reactivity: Human, Mouse, Rat

BackGround:

Early endosomes are cytoplasmic compartments that function in receiving and sorting endocytosed proteins for vesicular transport. EEA1 (early endosome antigen 1) is a peripheral membrane protein that co-localizes with the transferrin receptor and Rab5 on early endosomes. EEA1 contains a calmodulin-binding IQ motif and cysteine rich finger motif necessary for its specific localization to the early endosomes. EEA1 has sequence homology to several yeast proteins that have been implicated in membrane trafficking, including Vps27, Fab1 and Vac1. Evidence suggests a possible role for EEA1 in mediating the regulatory effects of 3'-phosphoinositides on membrane trafficking.

Product:

1 mg/ml in Phosphate buffered saline (PBS) with 15 mM sodium azide, approx. pH 7.2.

Molecular Weight:

~ 162 kDa

Swiss-Prot:

Q15075

Purification&Purity:

The antibody was affinity-purified from rabbit antiserum by affinity-chromatography using epitope-specific immunogen and the purity is > 95% (by SDS-PAGE).

Applications:

WB: 1:500~1:1000

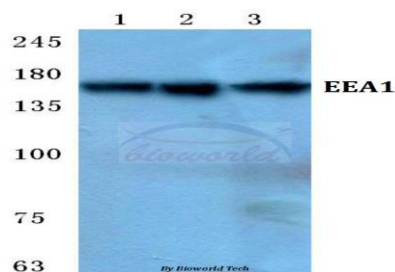
Storage&Stability:

Store at 4 °C short term. Aliquot and store at -20 °C long term. Avoid freeze-thaw cycles.

Specificity:

EEA1 polyclonal antibody detects endogenous levels of EEA1 protein.

DATA:



Western blot (WB) analysis of EEA1 polyclonal antibody at 1:500 dilution

Lane1:Hela cell lysate

Lane2:sp2/0 cell lysate

Lane3:PC12 cell lysate

Note:

For research use only, not for use in diagnostic procedure.

Bioworld Technology, Inc.

Add: 1660 South Highway 100, Suite 500 St. Louis Park, MN 55416, USA.

Email: info@bioworld.com

Tel: 6123263284

Fax: 6122933841

Bioworld technology, co. Ltd.

Add: No 9, weidi road Qixia District Nanjing, 210046, P. R. China.

Email: info@biogol.com

Tel: 0086-025-68037686

Fax: 0086-025-68035151