



## Dishevelled 3 polyclonal antibody

Catalog: BS5705

Host: Rabbit

Reactivity: Human, Mouse, Rat

### BackGround:

Mammalian homologs of the *Drosophila* dishevelled (Dsh) gene have been identified, including Dvl-1, Dvl-2 and Dvl-3. The mammalian dishevelled proteins contain three homologous domains, two of which are unrelated to any other known protein. The third region is homologous to the discs-large homology domain of *Drosophila* discs-large-1, a tumor suppressor protein. Like their *Drosophila* counterpart, the dishevelled proteins are thought to be involved in embryogenesis. Overexpression of Dvl-1 has been shown to inhibit the phosphorylation of tau by GSK-3 $\beta$ . This finding may prove to be important in Alzheimer's studies, which have shown that tau is hyperphosphorylated. In *Drosophila*, Dsh is a component of the frizzled signaling pathway. Both mammalian dishevelled and frizzled proteins are components of the Wnt signalling pathway.

### Product:

1mg/ml in PBS with 0.1% Sodium Azide, 50% Glycerol.

### Molecular Weight:

~ 90 kDa

### Swiss-Prot:

Q92997

### Purification&Purity:

The antibody was affinity-purified from rabbit antiserum by affinity-chromatography using epitope-specific immunogen and the purity is > 95% (by SDS-PAGE).

### Applications:

WB: 1:500~1:1000

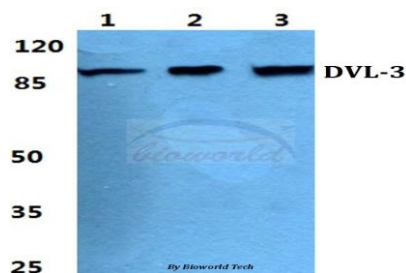
### Storage&Stability:

Store at 4 °C short term. Aliquot and store at -20 °C long term. Avoid freeze-thaw cycles.

### Specificity:

Dishevelled 3 polyclonal antibody detects endogenous levels of Dishevelled 3 protein.

### DATA:



Western blot (WB) analysis of Dishevelled 3 polyclonal antibody at 1:500 dilution

Lane1:HEK293T cell lysate

Lane2:Raw264.7 cell lysate

Lane3:Rat kidney tissue lysate

### Note:

For research use only, not for use in diagnostic procedure.

### Bioworld Technology, Inc.

Add: 1660 South Highway 100, Suite 500 St. Louis Park, MN 55416, USA.

Email: [info@bioworld.com](mailto:info@bioworld.com)

Tel: 6123263284

Fax: 6122933841

### Bioworld technology, co. Ltd.

Add: No 9, weidi road Qixia District Nanjing, 210046, P. R. China.

Email: [info@biogot.com](mailto:info@biogot.com)

Tel: 0086-025-68037686

Fax: 0086-025-68035151