

## CYP1B1 polyclonal antibody

Catalog: BS5681

Host: Rabbit

Reactivity: Human, Mouse, Rat

### BackGround:

Cytochrome P450 1B1 (CYP1B1) is a key enzyme involved in the production of potentially carcinogenic estrogen metabolites and the activation of environmental carcinogens and is the predominant member of the CYP1 family expressed in normal breast tissue and breast cancer. Estrogen has been proposed to trigger breast cancer development via an initiating mechanism involving its metabolite, catechol estrogen (CE). CYP1B1 catalyzes the conversion of 17-beta-estradiol to the catechol estrogen metabolites 2-OH-E2 and 4-OH-E2 which have both been postulated to be involved in mammary carcinogenesis. Genetic polymorphisms in CYP1B1 may play an important role in human prostate carcinogenesis as well. Polymorphism of the CYP1B1 gene at codon 432 (Val-->Leu) is associated with a change in catalytic function.

### Product:

1mg/ml in PBS with 0.1% Sodium Azide, 50% Glycerol.

### Molecular Weight:

~ 61, 70 kDa

### Swiss-Prot:

Q16678

### Purification&Purity:

The antibody was affinity-purified from rabbit antiserum by affinity-chromatography using epitope-specific immunogen and the purity is > 95% (by SDS-PAGE).

### Applications:

WB: 1:500~1:1000

ICC: 1:50~1:200

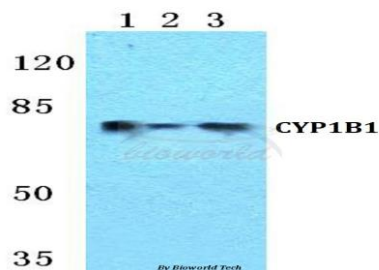
### Storage&Stability:

Store at 4 °C short term. Aliquot and store at -20 °C long term. Avoid freeze-thaw cycles.

### Specificity:

CYP1B1 polyclonal antibody detects endogenous levels of CYP1B1 protein.

### DATA:



Western blot (WB) analysis of CYP1B1 polyclonal antibody at 1:500 dilution

Lane1:Hela cell lysate

Lane2:Raw264.7 cell lysate

Lane3:PC12 cell lysate

### Note:

For research use only, not for use in diagnostic procedure.

### Bioworld Technology, Inc.

Add: 1660 South Highway 100, Suite 500 St. Louis Park, MN 55416, USA.

Email: [info@bioworld.com](mailto:info@bioworld.com)

Tel: 6123263284

Fax: 6122933841

### Bioworld technology, co. Ltd.

Add: No 9, weidi road Qixia District Nanjing, 210046, P. R. China.

Email: [info@biogot.com](mailto:info@biogot.com)

Tel: 0086-025-68037686

Fax: 0086-025-68035151