

## COMT polyclonal antibody

Catalog: BS5671

Host: Rabbit

Reactivity: Human, Mouse, Rat

### BackGround:

Catechol-O-methyltransferase (COMT) plays a crucial role in the regulation of central dopaminergic systems by catalyzing the inactivation of catechol-amines. It is widely distributed in most tissues in soluble and membrane-bound forms. COMT-mediated methylation metabolism of catecholamine neurotransmitters is a first-line detoxification pathway. A Val158Met polymorphism of the COMT gene affects activity of the enzyme and influences performance and efficiency of the prefrontal cortex of the brain. Sequential conversion of estradiol to methoxyestradiol by COMT, contributes to the antimitogenic effects of estradiol on vascular smooth muscle cell growth via estrogen receptor-independent mechanisms. COMT1 (catechol O-methyltransferase domain-containing protein 1) is a 262 amino acid single-pass type II membrane protein that belongs to the methyltransferase superfamily.

### Product:

1 mg/ml in Phosphate buffered saline (PBS) with 0.05% sodium azide, approx. pH 7.2.

### Molecular Weight:

~ 26 kDa (Soluble)

~ 30 kDa (Membrane bound)

### Swiss-Prot:

P21964

### Purification&Purity:

The antibody was affinity-purified from rabbit antiserum by affinity-chromatography using epitope-specific im-

munogen and the purity is &gt; 95% (by SDS-PAGE).

### Applications:

WB: 1:500~1:1000

ICC: 1:50~1:200

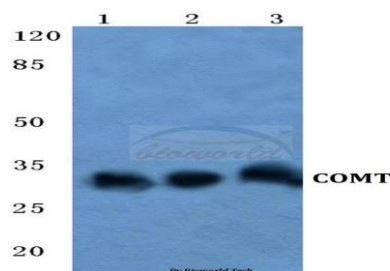
### Storage&Stability:

Store at 4 °C short term. Aliquot and store at -20 °C long term. Avoid freeze-thaw cycles.

### Specificity:

COMT polyclonal antibody detects endogenous levels of COMT protein.

### DATA:



Western blot (WB) analysis of COMT polyclonal antibody at 1:500 dilution

Lane1: HEK293T cell lysate

Lane2: Raw264.7 cell lysate

Lane3: Rat liver tissue lysate

### Note:

For research use only, not for use in diagnostic procedure.

### Bioworld Technology, Inc.

Add: 1660 South Highway 100, Suite 500 St. Louis Park, MN 55416, USA.

Email: [info@bioworld.com](mailto:info@bioworld.com)

Tel: 6123263284

Fax: 6122933841

### Bioworld technology, co. Ltd.

Add: No 9, weidi road Qixia District Nanjing, 210046, P. R. China.

Email: [info@biogot.com](mailto:info@biogot.com)

Tel: 0086-025-68037686

Fax: 0086-025-68035151