

## ALS polyclonal antibody

Catalog: BS5607

Host: Rabbit

Reactivity: Human, Mouse, Rat

### BackGround:

The Insulin-like growth factor binding proteins, or IGFBPs, are a family of seven proteins that have co-evolved with the IGFs. IGFBPs serve as shuttle molecules for both IGF-I and IGF-II and confer a level of regulation to the IGF signaling system by influencing the bio-availability, concentration and distribution of IGFs in the extracellular environment. In human circulation, the IGF-binding protein complex requires ALS (IGFBP acid-labile subunit), an extracellular protein involved in receptor-ligand binding and cell adhesion. ALS, detected primarily in plasma, is involved in protein-protein interactions that result in the formation of protein complexes.

### Product:

1 mg/ml in Phosphate buffered saline (PBS) with 0.05% sodium azide, approx. pH 7.2.

### Molecular Weight:

~ 66 kDa

### Swiss-Prot:

P35858

### Purification&Purity:

The antibody was affinity-purified from rabbit antiserum by affinity-chromatography using epitope-specific immunogen and the purity is > 95% (by SDS-PAGE).

### Applications:

WB: 1:500~1:1000

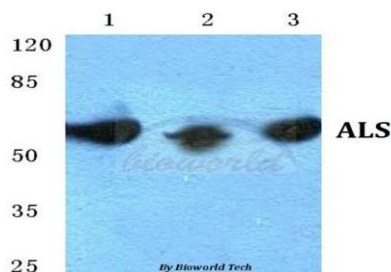
### Storage&Stability:

Store at 4 °C short term. Aliquot and store at -20 °C long term. Avoid freeze-thaw cycles.

### Specificity:

ALS polyclonal antibody detects endogenous levels of ALS protein.

### DATA:



Western blot (WB) analysis of ALS polyclonal antibody at 1:500 dilution

Lane1: HEK293T cell lysate

Lane2: Mouse liver tissue lysate

Lane3: Rat kidney tissue lysate

### Note:

For research use only, not for use in diagnostic procedure.

### Bioworld Technology, Inc.

Add: 1660 South Highway 100, Suite 500 St. Louis Park, MN 55416, USA.

Email: [info@bioworld.com](mailto:info@bioworld.com)

Tel: 6123263284

Fax: 6122933841

### Bioworld technology, co. Ltd.

Add: No 9, weidi road Qixia District Nanjing, 210046, P. R. China.

Email: [info@biogol.com](mailto:info@biogol.com)

Tel: 0086-025-68037686

Fax: 0086-025-68035151