

## ALDH3A1 polyclonal antibody

Catalog: BS5605

Host: Rabbit

Reactivity: Human, Mouse, Rat

### BackGround:

ALDH3A1 (stomach type, ALDH3, ALDHIII) forms a cytoplasmic homodimer that preferentially oxidizes aromatic aldehyde substrates. ALDH genes upregulate as a part of the oxidative stress response and appear to be abundant in certain tumors that have an accelerated metabolism toward chemotherapy agents.

### Product:

1mg/ml in PBS with 0.1% Sodium Azide, 50% Glycerol.

### Molecular Weight:

~ 50 kDa

### Swiss-Prot:

P30838

### Purification&Purity:

The antibody was affinity-purified from rabbit antiserum by affinity-chromatography using epitope-specific immunogen and the purity is > 95% (by SDS-PAGE).

### Applications:

WB: 1:500~1:1000

IHC: 1:50~1:200

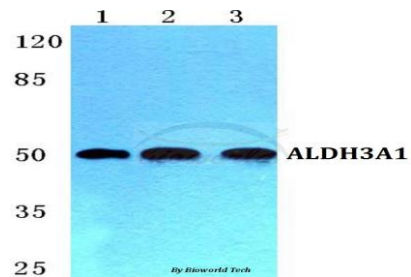
### Storage&Stability:

Store at 4 °C short term. Aliquot and store at -20 °C long term. Avoid freeze-thaw cycles.

### Specificity:

ALDH3A1 polyclonal antibody detects endogenous levels of ALDH3A1 protein.

### DATA:

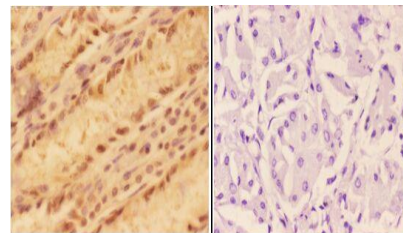


Western blot (WB) analysis of ALDH3A1 polyclonal antibody at 1:500 dilution

Lane1:MCF-7 cell lysate

Lane2:Mouse spleen tissue lysate

Lane3:Rat liver tissue lysate



BS5605  
Lot CN75131

Immunohistochemistry (IHC) analyzes of ALDH3A1 pAb in paraffin-embedded human stomach carcinoma tissue at 1:50, showing strong cytoplasmic and nuclear staining. Negative control (the right) Using PBS instead of primary antibody, secondary antibody is Goat Anti-Rabbit IgG-biotin followed by avidin-peroxidase.

### Note:

For research use only, not for use in diagnostic procedure.

### Bioworld Technology, Inc.

Add: 1660 South Highway 100, Suite 500 St. Louis Park, MN 55416, USA.

Email: [info@bioworld.com](mailto:info@bioworld.com)

Tel: 6123263284

Fax: 6122933841

### Bioworld technology, co. Ltd.

Add: No 9, weidi road Qixia District Nanjing, 210046, P. R. China.

Email: [info@biogot.com](mailto:info@biogot.com)

Tel: 0086-025-68037686

Fax: 0086-025-68035151