

Phospho-IRF3 (Ser386) Rabbit monoclonal antibody

Catalog: BS49627

Host: Rabbit

Reactivity: Human

BackGround:

This gene encodes a member of the interferon regulatory transcription factor (IRF) family. The encoded protein is found in an inactive cytoplasmic form that upon serine/threonine phosphorylation forms a complex with CREBBP. This complex translocates to the nucleus and activates the transcription of interferons alpha and beta, as well as other interferon-induced genes. The protein plays an important role in the innate immune response against DNA and RNA viruses. Mutations in this gene are associated with Encephalopathy, acute, infection-induced, herpes-specific, 7.

Product:

Rabbit IgG, 1mg/ml in PBS with 0.02% sodium azide, 50% glycerol, pH7.2.

Molecular Weight:

~ 52 kDa

Swiss-Prot:

Q14653

Purification&Purity:

The antibody was affinity-purified from rabbit antiserum by affinity-chromatography using epitope-specific immunogen and the purity is > 95% (by SDS-PAGE).

Applications:

WB: 1:500~1:1000

Storage&Stability:

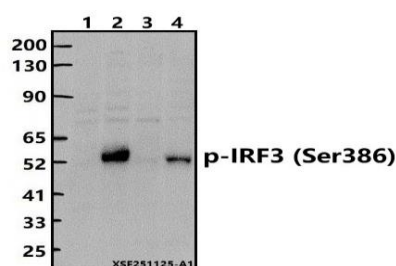
Store at 4 °C short term. Aliquot and store at -20 °C long

term. Avoid freeze-thaw cycles.

Specificity:

Phospho-IRF3 (Ser386) Rabbit monoclonal antibody detects endogenous levels of IRF3 protein only when phosphorylated at Ser386.

DATA:



Western blot (WB) analysis of Phospho-IRF3 (Ser386) Rabbit monoclonal antibody at 1:500 dilution

Lane1:A549 whole cell lysate(30ug)

Lane2:A549 treated with calyculin A(100nM,30min) whole cell lysate(30ug)

Lane3:MCF-7 whole cell lysate(30ug)

Lane4:MCF-7 treated with calyculin A(100nM,30min) whole cell lysate(30ug)

Note:

For research use only, not for use in diagnostic procedure.

Bioworld Technology, Inc.

Add: 1660 South Highway 100, Suite 500 St. Louis Park, MN 55416, USA.

Email: info@bioworld.com

Tel: 6123263284

Fax: 6122933841

Bioworld technology, co. Ltd.

Add: No 9, weidi road Qixia District Nanjing, 210046, P. R. China.

Email: info@biogot.com

Tel: 0086-025-68037686

Fax: 0086-025-68035151