

Myosin Light Chain 2 Recombinant Rabbit mAb

Catalog: BS49606

Host: Rabbit

Reactivity: Human, Mouse, Rat

BackGround:

Thus gene encodes the regulatory light chain associated with cardiac myosin beta (or slow) heavy chain. Ca⁺ triggers the phosphorylation of regulatory light chain that in turn triggers contraction. Mutations in this gene are associated with mid-left ventricular chamber type hypertrophic cardiomyopathy. [provided by RefSeq, Jul 2008]

Product:

Store at -20 °C. Supplied in 50mM Tris-Glycine(pH 7.4), 0.15M NaCl, 40% Glycerol, 0.01% sodium azide and 0.05% BSA. Stable for 12 months from date of receipt.

Molecular Weight:

19 kDa

Swiss-Prot:

P10916

Purification&Purity:

Affinity Purification

Applications:

WB: 1:1000-1:5000 IHC: 1:200-1:500

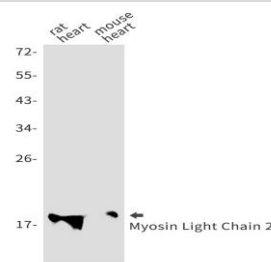
Storage&Stability:

Store at 4 °C short term. Aliquot and store at -20 °C long term. Avoid freeze-thaw cycles.

Isotype:

IgG

DATA:



Western blot detection of Myosin Light Chain 2 in rat heart, mouse heart using Myosin Light Chain 2 antibody.

Note:

For research use only, not for use in diagnostic procedure.

Bioworld Technology, Inc.

Add: 1660 South Highway 100, Suite 500 St. Louis Park, MN 55416, USA.

Email: info@bioworld.com

Tel: 6123263284

Fax: 6122933841

Bioworld technology, co. Ltd.

Add: No 9, weidi road Qixia District Nanjing, 210046, P. R. China.

Email: info@biogot.com

Tel: 0086-025-68037686

Fax: 0086-025-68035151