

HSP27 (phospho-S82) polyclonal antibody

Catalog: BS4762

Host: Rabbit

Reactivity: Human, Mouse, Rat

Background:

Hsp27, also referred to as the Estrogen-Regulated 24K protein and HSP28, is one of several small heat shock proteins (HSP) produced by all organisms studied. Hsp27 synthesis is induced by elevated temperature, as well as estrogen in hormone responsive cells. This protein is involved in stress resistance and actin organization. Interestingly, human HSP27 also shares greater than 50% homology with low molecular weight Drosophila HSP's and mammalian α -crystalline lens protein. Because of the estrogen-responsive nature of Hsp27, this protein has been studied extensively in human estrogen-responsive tissues such as cervix, endometrium and breast tissue. This work has led to the suggestion that Hsp27 may be a useful marker in classifying various hormone sensitive tumors.

Product:

1 mg/ml in Phosphate buffered saline (PBS) with 15 mM sodium azide, approx. pH 7.2.

Molecular Weight:

~ 27 kDa

Swiss-Prot:

P04792

Purification&Purity:

The antibody was affinity-purified from rabbit antiserum by affinity-chromatography using epitope-specific immunogen and the purity is > 95% (by SDS-PAGE).

Applications:

WB: 1:500~1:1000

IHC: 1:50~1:200

IP: 1:10~1:50

Storage&Stability:

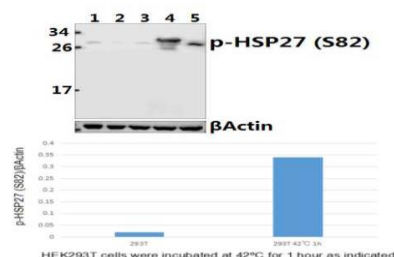
Store at 4 °C short term. Aliquot and store at -20 °C long term. Avoid freeze-thaw cycles.

Specificity:

HSP27 (phospho-S82) polyclonal antibody detects endogenous levels of HSP27 protein only when phosphory-

lated at Ser82.

DATA:



Western blot (WB) analysis of HSP27 (phospho-S82) pAb at 1:500 dilution

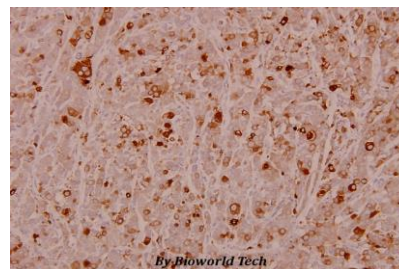
Lane1:A375 whole cell lysate

Lane2:SGC7901 whole cell lysate

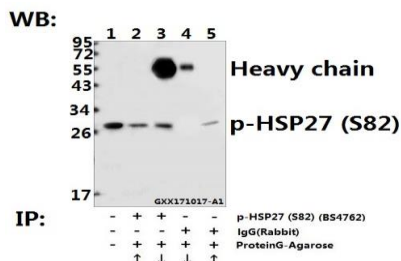
Lane3:HEK293T whole cell lysate

Lane4:HEK293T transfected with pCDNA3.1-Flag-HSP27 whole cell lysate

Lane5:HEK293T incubated at 42 °C for 1 hour whole cell lysate



Immunohistochemistry (IHC) analyzes of p-HSP27 (S82) pAb in paraffin-embedded human breast carcinoma tissue at 1:100.



Immunoprecipitation of L02 whole cell lysate using HSP27 (phospho-S82) pAb (Sephacose Bead Conjugate) #BD0047(lane 2 and lane 3) and Nonspecific IgG Control (Sephacose Bead Conjugate)#BD0047

Bioworld Technology, Inc.

Add: 1660 South Highway 100, Suite 500 St. Louis Park, MN 55416, USA.

Email: info@bioworld.com

Tel: 6123263284

Fax: 6122933841

Bioworld technology, co. Ltd.

Add: No 9, weidi road Qixia District Nanjing, 210046, P. R. China.

Email: info@biogot.com

Tel: 0086-025-68037686

Fax: 0086-025-68035151



PRODUCT DATA SHEET

Bioworld Technology, Inc.

(lane 4 and lane 5) .Lane 1 is 20% input. The western blot was probed using HSP27 (phospho-S82) pAb #BS4762. “↑”(supernatant); “↓”(deposition)

Note:

For research use only, not for use in diagnostic procedure.

Bioworld Technology, Inc.

Add: 1660 South Highway 100, Suite 500 St. Louis Park, MN 55416, USA.

Email: info@bioworld.com

Tel: 6123263284

Fax: 6122933841

Bioworld technology, co. Ltd.

Add: No 9, weidi road Qixia District Nanjing, 210046, P. R. China.

Email: info@biogot.com

Tel: 0086-025-68037686

Fax: 0086-025-68035151