

## c-Met (phospho-Y1349) polyclonal antibody

Catalog: BS4753

Host: Rabbit

Reactivity: Human, Mouse, Rat

### BackGround:

c-Met, a member of the tyrosine kinase superfamily, is the receptor for hepatocyte growth factor, also known as scatter factor (HGF/SF). The mature c-Met protein is a disulfide-linked heterodimer with Mr=190 kDa composed of a heavily glycosylated alpha subunit that is completely extracellular in localization, and a beta subunit comprised of an extracellular ligand binding domain, a single trans-membrane domain, and a cytoplasmic tyrosine kinase domain. Cells expressing c-Met include epithelial cells, endothelial cells, blood cells of various types, and glomerular mesenchymal cells.

### Product:

1 mg/ml in Phosphate buffered saline (PBS) with 0.05% sodium azide, approx. pH 7.2.

### Molecular Weight:

~ 156 kDa

### Swiss-Prot:

P08581

### Purification&Purity:

The antibody was affinity-purified from rabbit antiserum by affinity-chromatography using epitope-specific immunogen and the purity is > 95% (by SDS-PAGE).

### Applications:

WB: 1:500~1:1000

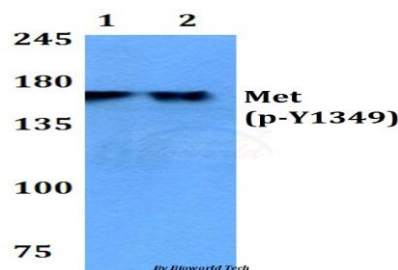
### Storage&Stability:

Store at 4 °C short term. Aliquot and store at -20 °C long term. Avoid freeze-thaw cycles.

### Specificity:

p-c-Met (Y1349) polyclonal antibody detects endogenous levels of c-Met protein only when phosphorylated at Tyr1349.

### DATA:



Western blot (WB) analysis of p-Met (Y1349) polyclonal antibody at 1:500 dilution

Lane1: THP-1 cell lysate treated with EGF(0.1ng/ml, 30mins)

Lane2: Hela cell lysate treated with EGF(0.1ng/ml, 30mins)

### Note:

For research use only, not for use in diagnostic procedure.

### Bioworld Technology, Inc.

Add: 1660 South Highway 100, Suite 500 St. Louis Park, MN 55416, USA.

Email: [info@bioworld.com](mailto:info@bioworld.com)

Tel: 6123263284

Fax: 6122933841

### Bioworld technology, co. Ltd.

Add: No 9, weidi road Qixia District Nanjing, 210046, P. R. China.

Email: [info@biogol.com](mailto:info@biogol.com)

Tel: 0086-025-68037686

Fax: 0086-025-68035151