

4E-BP1 (phospho-T46) polyclonal antibody

Catalog: BS4747

Host: Rabbit

Reactivity: Human, Mouse, Rat

BackGround:

The translation of proteins from eukaryotic mRNA is initiated by the multisubunit complex eIF-4F, which associates with the mRNA 5' cap structure. eIF-4E, a component of eIF-4F, is responsible for binding to the 5' cap structure and for the assembly of the eIF-4F complex. The regulatory protein 4E-BP1, also referred to as PHAS-I, inhibits eIF-4E function. Phosphorylation of 4E-BP1 by S6 kinase p70, MAP kinases or PKCs causes the disassociation of 4E-BP1 from eIF-4E, promoting translation. A protein that is functionally related to 4E-BP1, designated 4E-BP2, also associates with eIF-4E.

Product:

Rabbit IgG, 1mg/ml in PBS with 0.02% sodium azide, 50% glycerol, pH7.2

Molecular Weight:

~ 15 to 20 kDa

Swiss-Prot:

Q13541

Purification&Purity:

The antibody was affinity-purified from rabbit antiserum by affinity-chromatography using epitope-specific immunogen and the purity is > 95% (by SDS-PAGE).

Applications:

WB: 1:500~1:1000

IHC: 1:50~1:200

IP: 1:50~1:200

Storage&Stability:

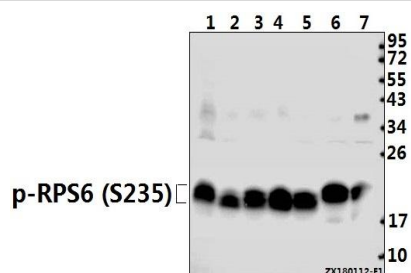
Store at 4 °C short term. Aliquot and store at -20 °C long term. Avoid freeze-thaw cycles.

Specificity:

p-4E-BP1 (T46) polyclonal antibody detects endogenous levels of 4E-BP1 protein only when phosphorylated at

Thr46.

DATA:



Western blot (WB) analysis of p-4E-BP1 (T46) pAb at 1:500 dilution

Lane1:PC3 whole cell lysate(40ug)

Lane2:HCT116 whole cell lysate(40ug)

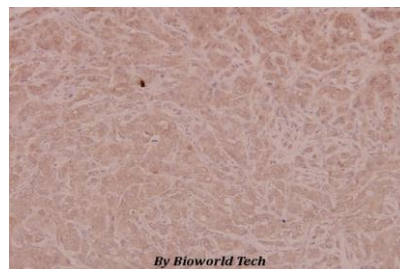
Lane3:SGC7901 whole cell lysate(40ug)

Lane4:EC9706 whole cell lysate(40ug)

Lane5:Panc1 whole cell lysate(40ug)

Lane6:3T3-L1 whole cell lysate(40ug)

Lane7:PC12 whole cell lysate(20ug)



Immunohistochemistry (IHC) analyzes of p-4E-BP1 (T46) pAb in paraffin-embedded human breast carcinoma tissue at 1:100.

Note:

For research use only, not for use in diagnostic procedure.

Bioworld Technology, Inc.

Add: 1660 South Highway 100, Suite 500 St. Louis Park, MN 55416, USA.

Email: info@bioworld.com

Tel: 6123263284

Fax: 6122933841

Bioworld technology, co. Ltd.

Add: No 9, weidi road Qixia District Nanjing, 210046, P. R. China.

Email: info@biogot.com

Tel: 0086-025-68037686

Fax: 0086-025-68035151