

IFN- γ R α (phospho-Y457) polyclonal antibody

Catalog: BS4697

Host: Rabbit

Reactivity: Human, Mouse, Rat

BackGround:

IFN gamma receptor beta is part of the receptor for interferon gamma. This class II cytokine receptor pairs with CDw119 to form the IFN gamma receptor and is an integral part of the IFN gamma signal transduction pathway. CDw119 serves as the IFN gamma binding chain and associates with the IFN gamma beta chain which is required for receptor signaling. The extracellular portion of both the IFN gamma receptor alpha and beta chains must be species matched. The IFN gamma receptor beta chain is expressed on T and B cells, NK cells, monocytes/ macrophages, and fibroblasts.

Product:

1 mg/ml in Phosphate buffered saline (PBS) with 0.05% sodium azide, approx. pH 7.2.

Molecular Weight:

~ 54, 90 kDa

Swiss-Prot:

P15260

Purification&Purity:

The antibody was affinity-purified from rabbit antiserum by affinity-chromatography using epitope-specific immunogen and the purity is > 95% (by SDS-PAGE).

Applications:

WB: 1:500~1:1000

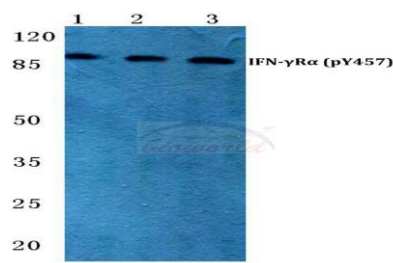
Storage&Stability:

Store at 4 °C short term. Aliquot and store at -20 °C long term. Avoid freeze-thaw cycles.

Specificity:

p-IFN- γ R α (Y457) polyclonal antibody detects endogenous levels of IFN- γ R α protein only when phosphorylated at Tyr457.

DATA:



Western blot (WB) analysis of p-IFNGR1 (Y457) polyclonal antibody at 1:500 dilution

Lane1: HEK293T cell lysate treated with IFN- γ (100 μ g/ML, 15 mins)

Lane2: HNIH-3T3 cell lysate treated with IFN- γ (100 μ g/ML, 15 mins)

Lane3: H9C2 cell lysate treated with IFN- γ (100 μ g/ML, 15 mins)

Note:

For research use only, not for use in diagnostic procedure.

Bioworld Technology, Inc.

Add: 1660 South Highway 100, Suite 500 St. Louis Park, MN 55416, USA.

Email: info@bioworld.com

Tel: 6123263284

Fax: 6122933841

Bioworld technology, co. Ltd.

Add: No 9, weidi road Qixia District Nanjing, 210046, P. R. China.

Email: info@biogol.com

Tel: 0086-025-68037686

Fax: 0086-025-68035151