

Ephrin-B1 (phospho-Y317) polyclonal antibody

Catalog: BS4682

Host: Rabbit

Reactivity: Human, Mouse, Rat

BackGround:

Eph receptors and ephrins exhibit complementary expression in many tissues during embryogenesis indicating that bidirectional activation of Eph receptors and ephrin-B proteins may occur at expression domain interfaces. Ephrin-B1 transduces outside-in signals through C-terminal protein interactions that effect integrin-mediated cell attachment and migration. The distribution of ephrin-B1 in the developing retina suggests that it influences retinal axon mapping along the dorsal-ventral axis and may be involved in intratectal development. The transmembrane ligand ephrin-B2 and its receptor tyrosine kinase EphB4 are specifically expressed on arterial and venous endothelial cells, respectively.

Product:

1 mg/ml in Phosphate buffered saline (PBS) with 0.05% sodium azide, approx. pH 7.2.

Molecular Weight:

~ 38, 45 kDa

Swiss-Prot:

P98172

Purification&Purity:

The antibody was affinity-purified from rabbit antiserum by affinity-chromatography using epitope-specific immunogen and the purity is > 95% (by SDS-PAGE).

Applications:

WB: 1:500~1:1000

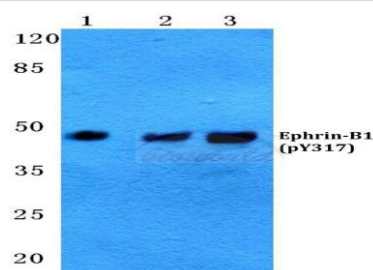
Storage&Stability:

Store at 4 °C short term. Aliquot and store at -20 °C long term. Avoid freeze-thaw cycles.

Specificity:

p-Ephrin-B1 (Y317) polyclonal antibody detects endogenous levels of Ephrin-B1 protein only when phosphorylated at Tyr317.

DATA:



Western blot (WB) analysis of p-Ephrin-B1 (Y317) polyclonal antibody at 1:500 dilution

Lane1:HepG2 cell lysate

Lane2:Mouse heart tissue lysate

Lane3:Rat skeletal muscle tissue lysate

Note:

For research use only, not for use in diagnostic procedure.

Bioworld Technology, Inc.

Add: 1660 South Highway 100, Suite 500 St. Louis Park, MN 55416, USA.

Email: info@bioworld.com

Tel: 6123263284

Fax: 6122933841

Bioworld technology, co. Ltd.

Add: No 9, weidi road Qixia District Nanjing, 210046, P. R. China.

Email: info@biogot.com

Tel: 0086-025-68037686

Fax: 0086-025-68035151