

KLF4 Recombinant Rabbit mAb

Catalog: BS45851

Host: Rabbit

Reactivity: Mouse, Rat

BackGround:

Transcription factor; can act both as activator and as repressor

Product:

Store at -20 °C. Supplied in 50mM Tris-Glycine(pH 7.4), 0.15M NaCl, 40%Glycerol, 0.01% sodium azide and 0.05% BSA. Stable for 12 months from date of receipt.

Molecular Weight:

52 kDa

Swiss-Prot:

Q60793

Purification&Purity:

Affinity Purification

Applications:

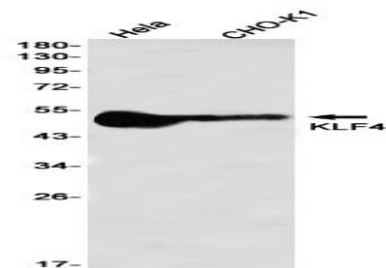
WB: 1:1000
IHC: 1:200-1:1000
ICC/IF: 1:200-1:1000
IP: 1:20

Storage&Stability:

Store at 4 °C short term. Aliquot and store at -20 °C long term. Avoid freeze-thaw cycles.

Isotype:

IgG

DATA:

Western blot detection of KLF4 in HeLa, CHO-K1 using KLF4 antibody(1:1000 diluted)

Note:

For research use only, not for use in diagnostic procedure.

Bioworld Technology, Inc.

Add: 1660 South Highway 100, Suite 500 St. Louis Park, MN 55416, USA.

Email: info@bioworld.com

Tel: 6123263284

Fax: 6122933841

Bioworld technology, co. Ltd.

Add: No 9, weidi road Qixia District Nanjing, 210046, P. R. China.

Email: info@biogot.com

Tel: 0086-025-68037686

Fax: 0086-025-68035151