

eIF4B (phospho-S422) polyclonal antibody

Catalog: BS4311

Host: Rabbit

Reactivity: Human, Mouse, Rat

BackGround:

Required for the binding of mRNA to ribosomes. Functions in close association with EIF4-F and EIF4-A. Binds near the 5'-terminal cap of mRNA in presence of EIF4-F and ATP. Promotes the ATPase activity and the ATP-dependent RNA unwinding activity of both EIF4-A and EIF4-F. It is phosphorylated at Ser-422 by RPS6KA1 and RPS6KB1. Phosphorylation enhances the affinity of EIF4B for the EIF3 complex.

Product:

1 mg/ml in Phosphate buffered saline (PBS) with 0.05% sodium azide, approx. pH 7.2.

Molecular Weight:

~ 80 kDa

Swiss-Prot:

P23588

Purification&Purity:

The antibody was affinity-purified from rabbit antiserum by affinity-chromatography using epitope-specific immunogen and the purity is > 95% (by SDS-PAGE).

Applications:

WB: 1:500~1:1000

IHC: 1:50~1:200

Storage&Stability:

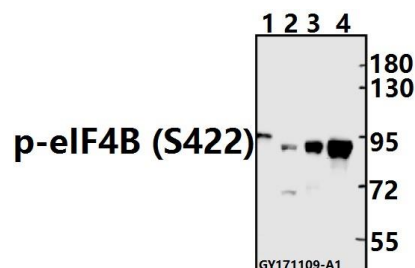
Store at 4 °C short term. Aliquot and store at -20 °C long term. Avoid freeze-thaw cycles.

Specificity:

p-eIF4B (S422) polyclonal antibody detects endogenous levels of eIF4B protein only when phosphorylated at

Ser422

DATA:



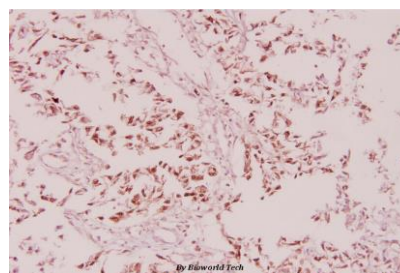
Western blot (WB) analysis of p-eIF4B (S422) pAb at 1:500 dilution

Lane1: The Brain tissue lysate of Rat (40ug)

Lane2: K562 whole cell lysate (40ug)

Lane3: A375 whole cell lysate (40ug)

Lane4: HCT116 whole cell lysate (40ug)



Immunohistochemistry (IHC) analysis of p-eIF4B (S422) pAb in paraffin-embedded human breast carcinoma tissue at 1:100.

Note:

For research use only, not for use in diagnostic procedure.

Bioworld Technology, Inc.

Add: 1660 South Highway 100, Suite 500 St. Louis Park, MN 55416, USA.

Email: info@bioworld.com

Tel: 6123263284

Fax: 6122933841

Bioworld technology, co. Ltd.

Add: No 9, weidi road Qixia District Nanjing, 210046, P. R. China.

Email: info@biogot.com

Tel: 0086-025-68037686

Fax: 0086-025-68035151