

HSP90B (phospho-S254) polyclonal antibody

Catalog: BS4235

Host: Rabbit

Reactivity: Human, Mouse, Rat

BackGround:

HSP 90 family members guide the normal folding, intracellular disposition and proteolytic turnover of many key regulators of cell growth, differentiation and survival. HSP 90alpha, also designated HSP90A, HSP 86 and LPS-associated protein 2 (LAP2), is a cytosolic enhancer of inducible nitric-oxide synthase (iNOS), with chaperone activity that is important for the transcriptional activity of p53. HSP 90beta, also designated HSP90B, HSP 84 and HSPC2, is a cytosolic protein that participates in signaling pathways with PKC epsilon to protect cells from external damage, particularly in heat shock-mediated events. GRP 94, also known as tumor rejection antigen 1 (TRA1), ECGP and GP96, localizes to the ER, is highly expressed in BGC-823 human gastric carcinoma cells and is upregulated in human endothelial cells in response to hypoxia by HIF-1.

Product:

1 mg/ml in Phosphate buffered saline (PBS) with 0.05% sodium azide, approx. pH 7.2.

Molecular Weight:

~ 90 kDa

Swiss-Prot:

P08238

Purification&Purity:

The antibody was affinity-purified from rabbit antiserum by affinity-chromatography using epitope-specific immunogen and the purity is > 95% (by SDS-PAGE).

Applications:

WB: 1:1000~1:5000

IHC: 1:50~1:200

IF: 1:50~1:200

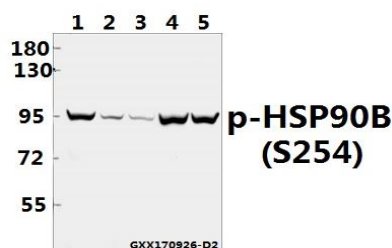
Storage&Stability:

Store at 4 °C short term. Aliquot and store at -20 °C long term. Avoid freeze-thaw cycles.

Specificity:

HSP90B (phospho-S254) polyclonal antibody detects endogenous levels of HSP90B protein when phosphorylated at Ser254.

DATA:



Western blot (WB) analysis of HSP90B (phospho-S254) pAb at 1:5000 dilution

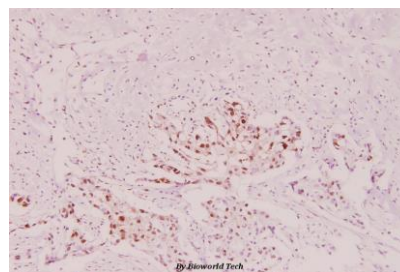
Lane1:MCF-7 whole cell lysate(40ug)

Lane2:The Testis tissue lysate of Mouse(40ug)

Lane3:The Testis tissue lysate of Rat(40ug)

Lane4:HEK293T whole cell lysate(40ug)

Lane5:Hela whole cell lysate(40ug)



Immunohistochemistry (IHC) analyzes of HSP90B (phospho-S254) polyclonal antibody in paraffin-embedded human breast carcinoma tissue at 1:100.

Note:

For research use only, not for use in diagnostic procedure.

Bioworld Technology, Inc.

Add: 1660 South Highway 100, Suite 500 St. Louis Park, MN 55416, USA.

Email: info@bioworld.com

Tel: 6123263284

Fax: 6122933841

Bioworld technology, co. Ltd.

Add: No 9, weidi road Qixia District Nanjing, 210046, P. R. China.

Email: info@biogot.com

Tel: 0086-025-68037686

Fax: 0086-025-68035151



PRODUCT DATA SHEET

Bioworld Technology, Inc.

Bioworld Technology, Inc.

Add: 1660 South Highway 100, Suite 500 St. Louis Park,
MN 55416, USA.

Email: info@bioworld.com

Tel: 6123263284

Fax: 6122933841

Bioworld technology, co. Ltd.

Add: No 9, weidi road Qixia District Nanjing, 210046,
P. R. China.

Email: info@biogot.com

Tel: 0086-025-68037686

Fax: 0086-025-68035151